

# INDOOR UNITS

Provide you with fresh air



## Indoor Units line Up

Capacity (kW)	4-way cassette (Compact type)	Round flow cassette
2.2	•	
2.8	•	
3.6	•	
4.5	•	
5.6		•
7.1		•
8.0		
9.0		
10.0		
11.2		
12.0		
12.5		
14.0		
15.0		
16.0		

Capacity (kW)	Wall-mounted	Floor Ceiling	Short ceiling concealed ducted unit	Medium ESP ducted unit	High ESP ducted unit	Fresh air processor
2.2	•		•			
2.8	•		•			
3.6	•	•	•			
4.5	•	•	•			
5.6	•	•	•			
7.1	•	•	•	•	•	
8.0		•	•	•	•	
9.0		•		•	•	
10.0				•	•	
11.2		•				
12.0				•	•	
14.0		•				•
15.0				•	•	
16.0		•				
20.0					•	
22.4						•
25.0					•	
28.0					•	•
45.0					•	•
56.0					•	•

# 4-way Cassette(Compact Type)/Round-flow Cassette



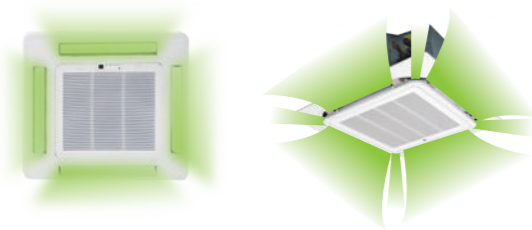
## Features

### Accessories

Plenum box	Air filter	EXV	Drain pump	AC motor	DC motor
/	Standard	Standard	Standard(built-in)	Standard	Optional

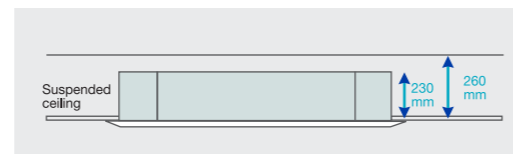
### Wide air delivering

Air flow is soft and smooth, air can be delivered to every corner without dead angle, it makes the room temperature distribution more balance.



### Space saving installation

It has a slim body with 230mm height, it is specially suitable for low suspended ceiling rooms.(5.6~8.0kW)



### Fresh air intake

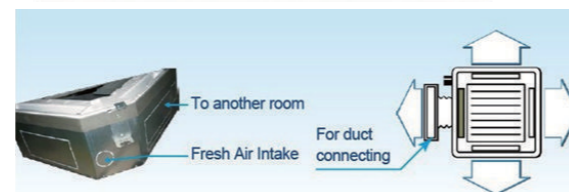
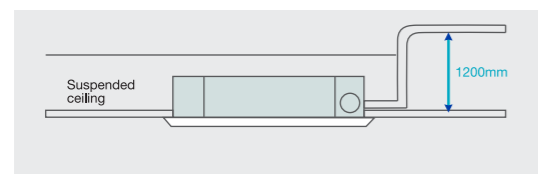
Four interfaces to connect with duct to another room. Fresh air intake, more healthy and comfortable.



### Built-in with drainage pump

Built-in with low noise long life drainage pump, Pumping head is 1200mm, flexible for drainage pipe design.

Note: The pumping head of 4-way cassette unit (compact type)is 700mm.



## Specification

### 4-way Cassette Unit(Compact type)

Model name	Power type	Capacity				Power input	Air flow		Sound Level	ESP	Dimension(WxHxD)				Body Weight		Connecting pipe			Standard controller
		Cooling	Heating	Cooling	Heating		M <sup>3</sup> /h	CFM			Packing	Body	Panel packing	Panel	Net	Gross	Gas	Liquid	Drain	
		kW	kBtu/h	kW	kBtu/h	kW	M <sup>3</sup> /h	CFM	DB(A)	Pa	mm	mm	mm	mm	kg	kg	mm	mm	mm	
HECI07CC4P5VC	50Hz	2.2	7.5	2.5	8.5	0.038	447	263	22-34						17.5	23				
HECI09CC4P5VC	50Hz	2.8	9.5	3.2	10.9	0.038	447	263	22-34											
HECI12CC4P5VC	50Hz	3.6	12.2	4.0	13.6	0.040	515	303	27-38		755	653	750	650	17.5	23				
HECI15CC4P5VC	50Hz	4.5	15.3	5.0	17	0.040	515	303	27-38		375	267	95	30						
											680	585	750	650	17.5	23				
															17.5	23				

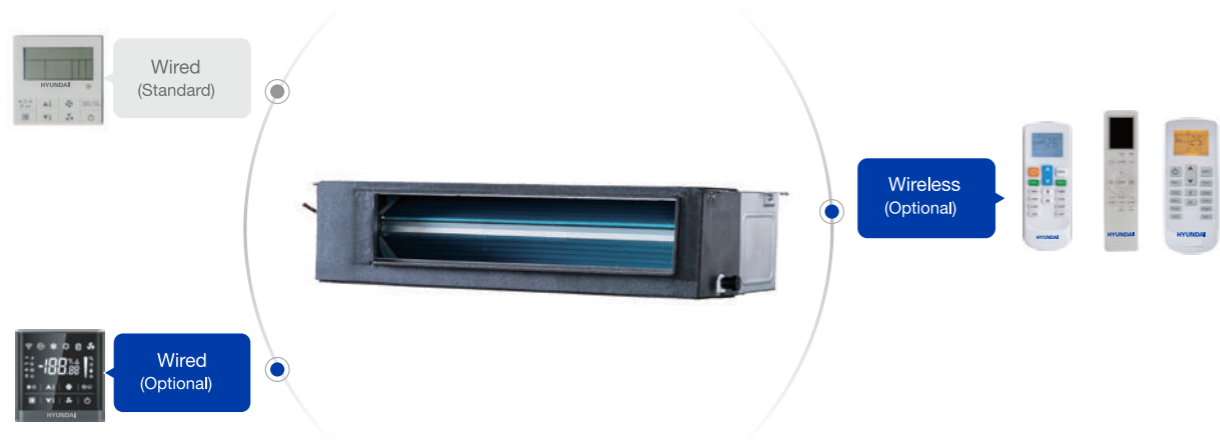
### Round-flow Cassette

Model name	Power type	Capacity				Power input	Air flow		Sound Level	ESP	Dimension(WxHxD)				Body Weight		Connecting pipe			Standard controller
		Cooling	Heating	Cooling	Heating		M <sup>3</sup> /h	CFM			Packing	Body	Panel packing	Panel	Net	Gross	Gas	Liquid	Drain	
		kW	kBtu/h	kW	kBtu/h	kW	M <sup>3</sup> /h	CFM	DB(A)	Pa	mm	mm	mm	mm	kg	kg	mm	mm	mm	
HECI18CC4HRI	50Hz	5.6	19.1	6.3	21.4	0.043	860	500	32-39		920	833	1030	950	24	30				
HECI24CC4HRI	50Hz	7.1	24.2	8.0	27.2	0.093	1200	700	35-39		265	232	100	50						
											985	900	1030	950	24	30				

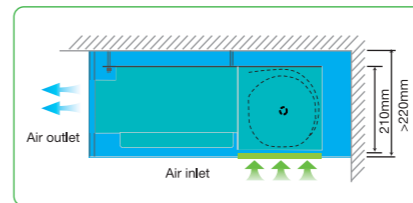
Notes:

- 1.Power supply: 220~240V/1N for 50Hz; the above data is for AC motor model.
- 2.Cooling test condition: indoor side 27°C DB, 19°C WB outdoor side 35°C DB. Heating test condition: indoor side 20°C DB, 15°C WB outdoor side 7°C DB.
- 3.Sound level: measured at a point 1 m in front of the unit at a height of 1.5m. During actual operation, these values are normally somewhat higher as a result of ambient conditions.
- 4.The above data may be changed without notice for future improvement on quality and performance.

# Short Ceiling Concealed Ducted Unit



**Slim body, easy to install**  
Has slim body with 210mm height, it is specially suitable for low suspended ceiling rooms.



- DC fan motor is optional**
- Integrated design of motor and motor bracket, lower noise**
- Drain pump is optional**  
Pumping head is 700mm.



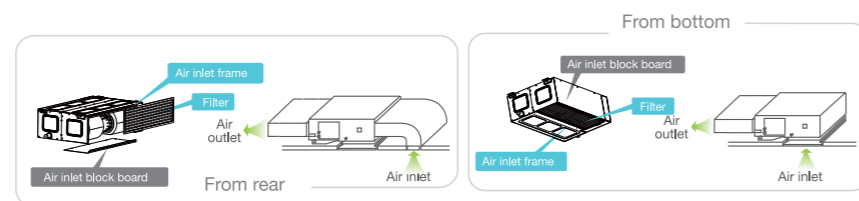
## Features

### Accessories

Plenum box	Air filter	EXV	Drain pump	AC motor	DC motor
Standard	Optional	Standard(built-in)	Optional	Standard	Optional

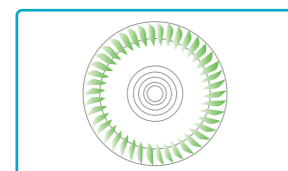
### Flexible installation

Air return method is optional by actual installation, from rear or from bottom.



### Big air flow low noise centrifugal fan wheel

Big air flow low noise centrifugal fan blade with special air tunnel system, and the unique shock absorption measures, making this series ducted units' running noise is as low as 24 dB(A), let users to enjoy the comfort, sleep without any disturbance.



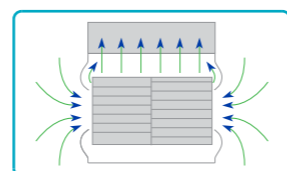
Special resin material fan wheel.



All vanes are dislocation distribution to offset sound wave, so that the noise can be reduced.



High efficiency low noise motor, motor and support frame with rubber ring isolation, can absorb vibration and reduce noise.



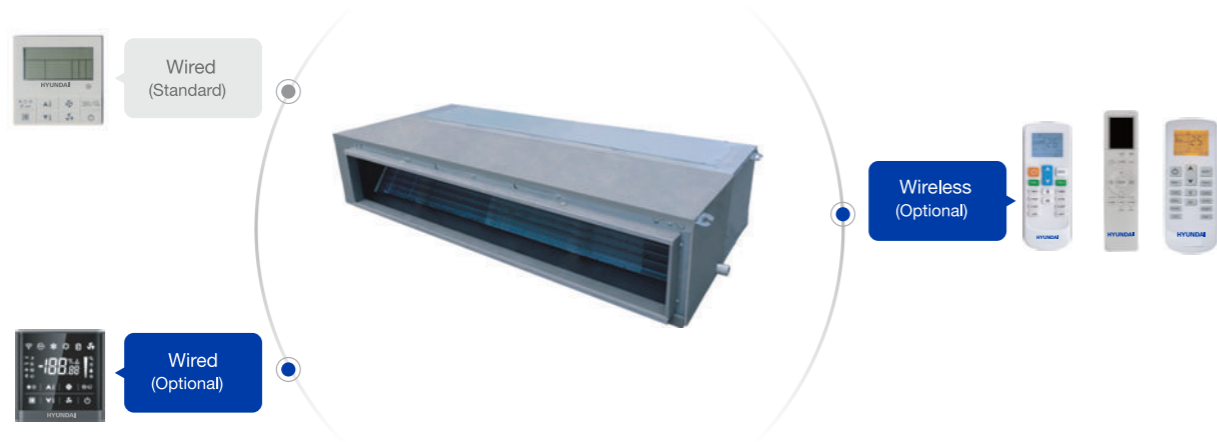
Air inlet of fan wheel casing is arch curved design; it can reduce air flow's disturbance, make if flow smoother to reduce noise.

## Specification

Model name	Power type	Capacity				Rated input	Air flow		Sound Level	ESP	Dimension (WxHxD)				Body Weight		Connecting pipe			Standard controller	
		Cooling kW	Heating kW	Heating kBTu/h	Heating kW		M <sup>3</sup> /h	CFM			DB(A)	Pa	Packing mm	Body mm	Panel packing mm	Panel mm	Net kg	Gross kg	Gas mm		Liquid mm
HECI07DLP5VC	50Hz	2.2	7.5	2.5	8.5	0.08	450	260	24-29	30	910 x 240 x 510	814 x 210 x 487	/	/	16.0	18.5	Φ9.52	/	/	Wired controller	
HECI09DLP5VC	50Hz	2.8	9.5	3.2	10.9										16.0	18.5					
HECI12DLP5VC	50Hz	3.6	12.2	4.0	13.6	0.11	550	324	25-32	30	910 x 240 x 510	814 x 210 x 487	/	/	16.5	19.0	Φ6.35	/	/	Wired controller	
HECI15DLP5VC	50Hz	4.5	15.3	5.0	17										16.5	19.0					Φ12.7
HECI18DLP5VC	50Hz	5.6	19.1	6.3	21.4	0.16	800	520	28-38	30	1110 x 240 x 510	1010 x 210 x 487	/	/	21.0	24.0	Φ15.88	Φ9.52	/	/	Wired controller
HECI24DLP5VC	50Hz	7.1	24.2	8.0	27.2	0.18	1000	640	30-39	30	1310 x 240 x 510	1214 x 210 x 487	/	/	25.5	28.5					

Notes:  
1.Power supply: 220-240V/1N for 50Hz; the above data is for AC motor model.  
2.Cooling test condition: indoor side 27°C DB, 19°C WB outdoor side 35°C DB. Heating test condition: indoor side 20°C DB, 15°C WB outdoor side 7°C DB.  
3.Sound level: measured at a point 1 m in front of the unit at a height of 1.5m. During actual operation, these values are normally somewhat higher as a result of ambient conditions.  
4.The above data may be changed without notice for future improvement on quality and performance.

# Medium ESP Ducted Unit



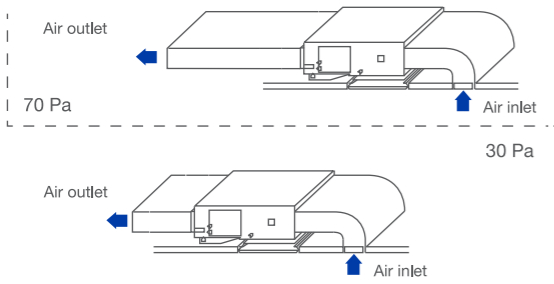
## Features

### Accessories

Plenum box	Air filter	EXV	Drain pump	AC motor	DC motor
Standard	Standard	Standard	Optional	Standard	Optional

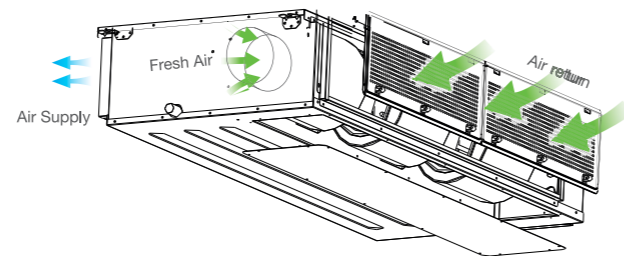
### Static pressure

70Pa ESP is standard, suitable for long distance air supply, 30Pa is optional (can be set on site), suitable for low noise requirement rooms.



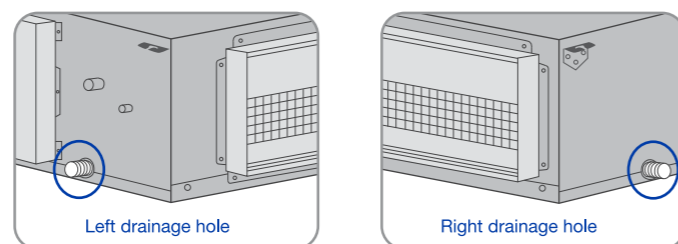
### Fresh air intake

A reserved outside air intake port allows outdoor air to be introduced directly into the unit, no need for a separate ventilation system.



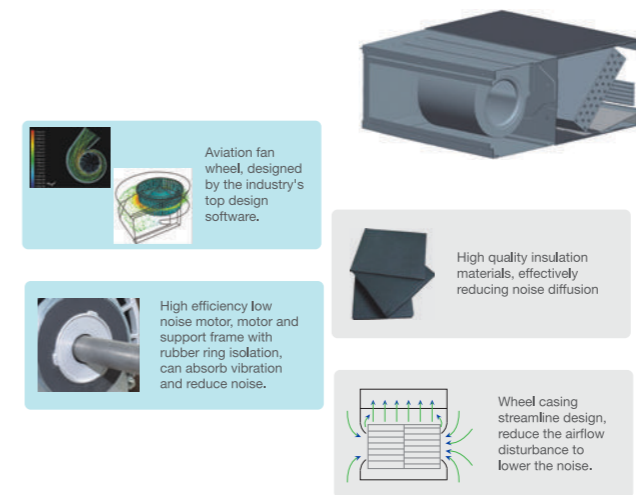
### Convenient in drainage pipe installation

Reserved drainage pipe outlet holes on left side and right side, installer can choose the outlet holes on site as per actual conditions, flexible for drainage pipe installation.



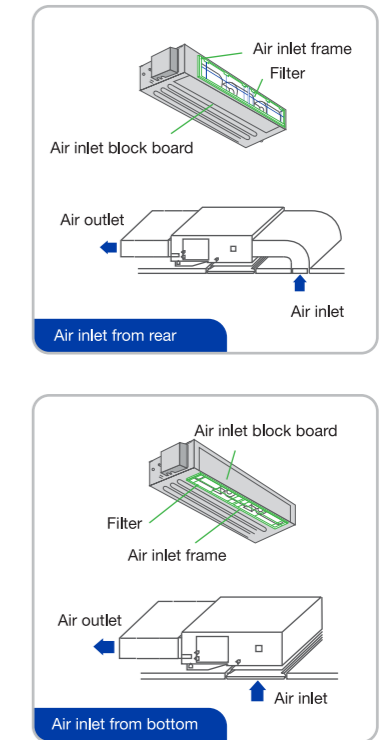
### Whole unit low noise design, silent operation

Using multiple noise reduction technology, including the design of high efficiency low noise motor, aviation fan wheel, low vibration wheel casing, unique design, the inner wall configuration with high quality insulation materials, and so on, to make the units running in a low noise condition.



### Two air return installation methods

Air return from rear or bottom is easy to change on site, convenient for installation.



### DC fan motor is optional

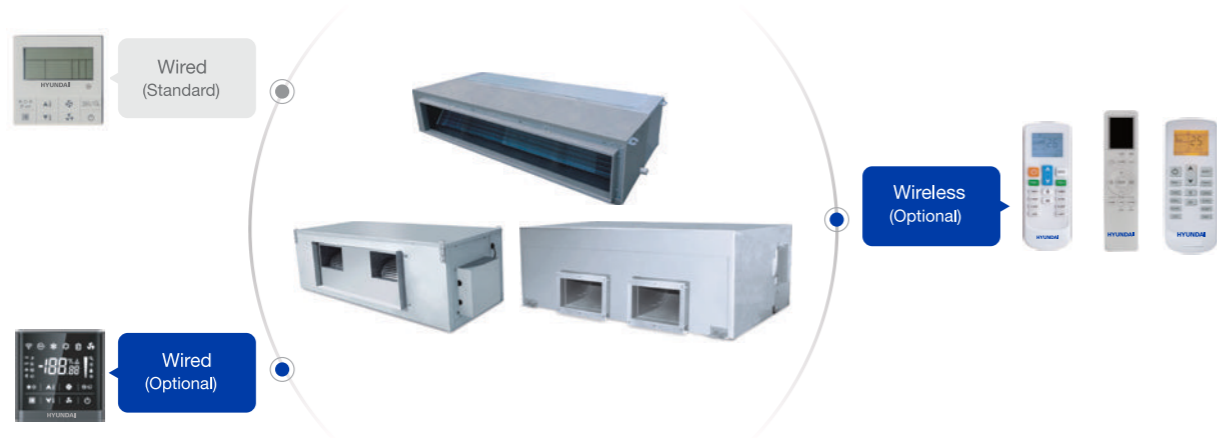
The power consumption of DC fan motor can be reduced greatly in comparison to corresponding AC type.

## Specification

Model name	Power type	Capacity				Rated input	Air flow		Sound Level	ESP	Dimension (WxHxD)				Body Weight			Connecting pipe			Standard controller
		Cooling	Heating	Cooling	Heating		M <sup>3</sup> /h	CFM			Packing	Body	Panel packing	Panel	Net	Gross	Gas	Liquid	Drain		
HEC124DMP5VB	50Hz	7.1	24.2	8.0	27.2	0.40	1220	710	36-41	70	1255	1209	/	/	33	37	φ15.88	φ9.52	φ25	Wired controller	
HEC128DMP5VB	50Hz	8.0	27.2	9.0	30.7						325	260									
HEC132DMP5VB	50Hz	9.0	30.7	10.0	34.1						720	680									
HEC136DMP5VB	50Hz	10.0	34.1	11.0	37.5						1490	1445									
HEC142DMP5VB	50Hz	12.0	40.9	13.0	44.3						325	260									
HEC160DMP5VB	50Hz	15.0	51.1	17.0	58	720	680	46	50	46	50										

Notes:  
 1. Power supply: 220-240V/1N for 50Hz; the above data is for AC motor model.  
 2. Cooling test condition: indoor side 27°C DB, 19°C WB outdoor side 35°C DB. Heating test condition: indoor side 20°C DB, 15°C WB outdoor side 7°C DB.  
 3. Sound level: measured at a point 1 m in front of the unit at a height of 1.5m. During actual operation, these values are normally somewhat higher as a result of ambient conditions.  
 4. The above data may be changed without notice for future improvement on quality and performance.

# High ESP Ducted Unit



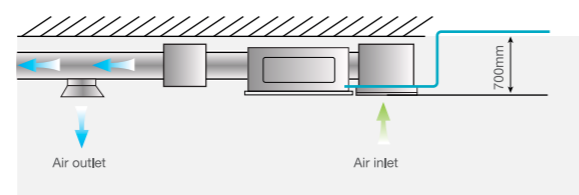
## Features

### Accessories

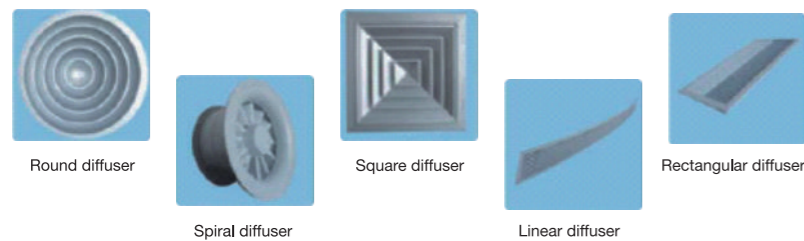
Plenum box	Air filter	EXV	Drain pump	AC motor	DC motor
Standard	Standard	Standard	Optional	Standard	/

### Optional water pump

Slim body, saving suspended ceiling spaces. And water pump is optional, pump head up to 700mm



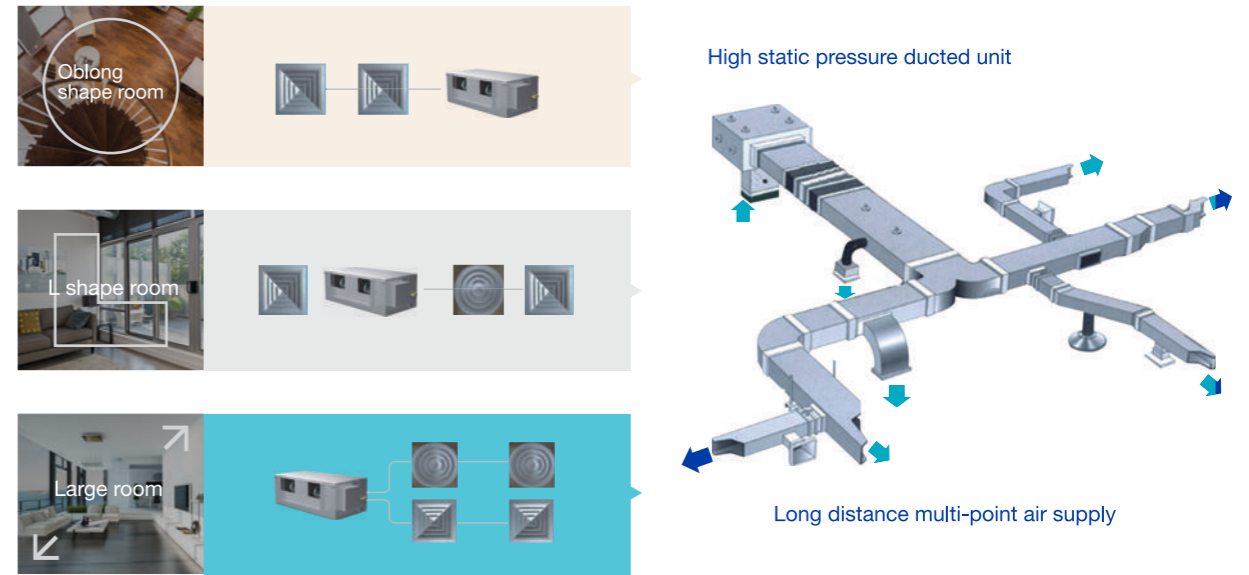
### Can be used with various diffusers



Used with various diffusers, meet for different kinds of decoration.

### High static pressure

Big air flow with high static pressure, easy for large rooms duct design. Suitable for different shape of rooms.



## Specification

Model name	Power type	Capacity				Power input	Air flow		Sound level	ESP	Dimension (WxHxD)		Body Weight		Connecting pipe			Standard controller
		Cooling	Heating	Heating	Heating		M <sup>3</sup> /h	CFM			Packing	Body	Net	Gross	Gas	Liquid	Drain	
		kW	kBtu/h	kW	kBtu/h	kW			DB(A)	Pa	mm	mm	kg	kg	mm	mm	mm	
HEC124DHP5VB	50Hz	7.1	24.2	7.8	26.6						150	1490 x 325 x 720	1445 x 260 x 680	46	50			
HEC128DHP5VB	50Hz	8.0	27.2	8.8	30	0.40	1500	880	40-42									
HEC132DHP5VB	50Hz	9.0	30.7	10.0	34.1													
HEC136DHP5VB	50Hz	10.0	34.1	11.0	37.5							1245 x 445 x 655	1190 x 370 x 620	47	51			
HEC142DHP5VB	50Hz	12.0	40.9	13.0	44.3	0.50	2300	1350	44-52									
HEC160DHP5VB	50Hz	15.0	51.1	17.0	58.0													
HEC172DHP5VB	50Hz	20.0	68.2	22.0	75.0	1.72	4000	2350	45-53			1510x580x870	1465x448x811					
HEC186DHP5VB	50Hz	25.0	85.3	27.5	93.8	1.72	4200	2470	45-54									
HEC196DHP5VB	50Hz	28.0	95.5	30.8	105.0	1.72	4400	2580	45-55									
HEC155DHP5VB	50Hz	45.0	153.5	50.0	170.6	2.60	6000	3520	60		200	2267 x 840 x 1050	2165 x 676 x 916	222	260	Φ28.6	Φ15.88	Φ32
HEC190DHP5VB	50Hz	56.0	191.0	63.0	214.9	3.40	8000	4700	64									

Notes:

1. Power supply: 220-240V/1N for 50Hz; 208-230V/1N for 60Hz.

2. Cooling test condition: indoor side 27°C DB, 19°C WB outdoor side 35°C DB. Heating test condition: indoor side 20°C DB, 15°C WB outdoor side 7°C DB.

3. Sound level: measured at a point 1 m in front of the unit at a height of 1.5m. During actual operation, these values are normally somewhat higher as a result of ambient conditions.

4. The above data may be changed without notice for future improvement on quality and performance.

# Wall Mounted Unit



## Features

### Accessories

Plenum box	Air filter	EXV	Drain pump	AC motor	DC motor
/	Standard	Standard(built-in)	/		Standard

### Air supply smoothly

Cross flow fan, In Cooling mode, cold air is blown from horizontal. In heating mode, warm air is blown from vertical.

### 2 panels can be chosen, suitable for all kinds of decoration style

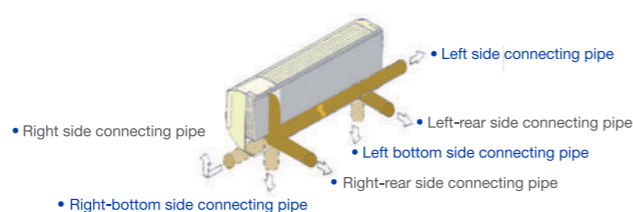
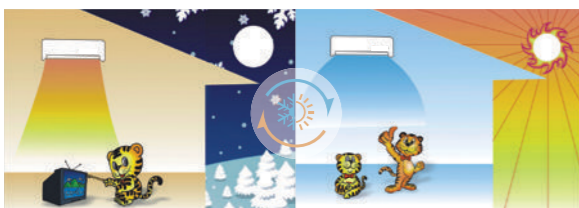
Simple, elegant, stylish, mirror design, suitable for all kinds of decoration style.

### Flexible in installation

Refrigerant pipe can be connected from 3 directions.

### Hotel card function

Hotel card interface is standard, which are designed to save energy by only running appliances while guest are present in their room.



## Specification

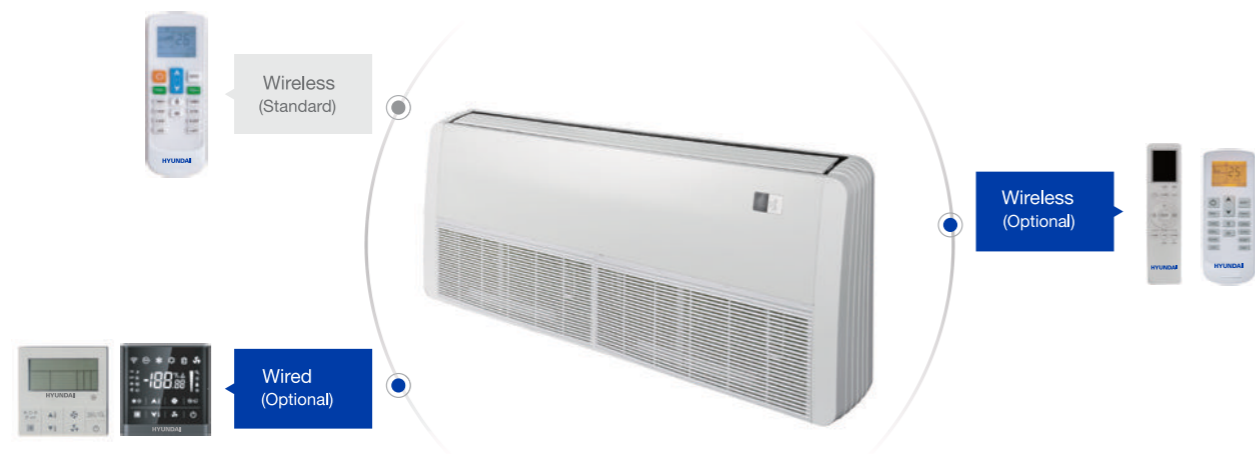
Model		HECI07WMP5VGS	HECI09WMP5VGS	HECI12WMP5VGS	HECI15WMP5VGS	HECI18WMP5VGS	HECI24WMP5VGS	
Power Supply		220-240V/1N/50Hz	220-240V/1N/50Hz	220-240V/1N/50Hz	220-240V/1N/50Hz	220-240V/1N/50Hz	220-240V/1N/50Hz	
Capacity	Cooling	kW	2.2	2.8	3.6	4.5	5.6	7.1
	Heating	kW	2.5	3.2	4.0	5.0	6.3	8.0
Power input		W	15	15	18	20	23	35
Fan motor	Type		DC	DC	DC	DC	DC	DC
	Speed (Hi/Med/Low)	r/min	1000/900/870/850	1000/900/870/850	1100/1000/950/900	1050/950/900/850	1100/1000/950/900	1300/1200/1100/1000
Air flow		m <sup>3</sup> /h	440/380/360/350	440/380/360/350	500/440/415/380	655/610/565/525	720/645/580/560	890/805/720/645
Sound Pressure level		dB(A)	24-33	24-33	27-36	29-38	32-42	35-43
Body dimension (WxD)	Net	mm	864x300x200	864x300x200	864x300x200	972x320x215	972x320x215	972x320x215
	Packing	mm	945x375x290	945x375x290	945x375x290	1060x400x310	1060x400x310	1060x400x310
Body weight		Net/Gross	kg	9.5/12	9.5/12	9.5/12	11.5/14	11.5/14
Refrigerant type			R410A	R410A	R410A	R410A	R410A	R410A
Throttle type			EXV	EXV	EXV	EXV	EXV	EXV
Liquid pipe/Gas pipe		mm	Φ6.35/Φ9.52	Φ6.35/Φ9.52	Φ6.35/Φ12.7	Φ6.35/Φ12.7	Φ6.35/Φ12.7	Φ9.52/Φ15.88
Drainage water pipe (Outer diameter)		mm	Φ20	Φ20	Φ20	Φ20	Φ20	Φ20
Operation temperature		-	16-32	16-32	16-32	16-32	16-32	16-32

Notes:  
 1.Power supply: 220-240V/1N for 50Hz;  
 2.Cooling test condition: indoor side 27°C DB, 19°C WB outdoor side 35°C DB, Heating test condition: indoor side 20°C DB, 15°C WB outdoor side 7°C DB,  
 3.Sound level: measured at a point 1 m in front of the unit at a height of 1.5m. During actual operation, these values are normally somewhat higher as a result of ambient conditions.  
 4.The above data may be changed without notice for future improvement on quality and performance

## Wall Mounted Unit



# Floor Ceiling Unit



## Features

### Accessories

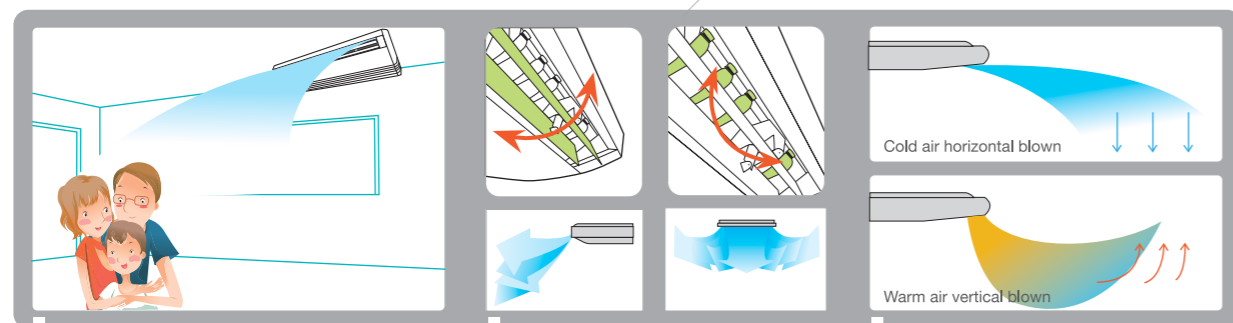
Plenum box	Air filter	EXV	Drain pump	AC motor	DC motor
/	Standard	Standard(built-in)	Optional	Standard	Optional

### Flexible installation

According to actual project needs, choose ceiling suspended installation or floor standing installation.



### Wide angle air supply

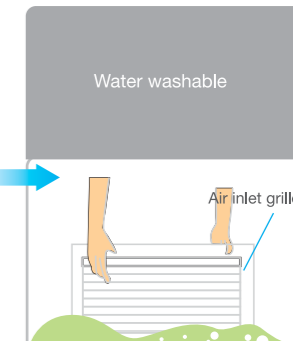
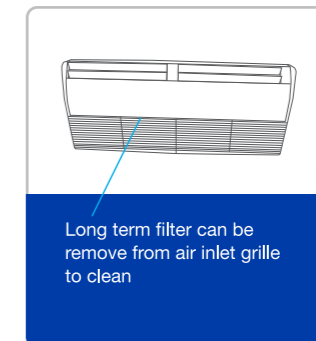
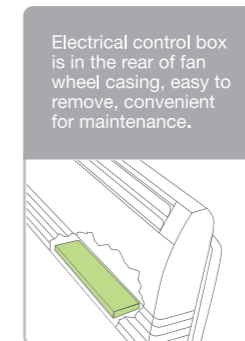
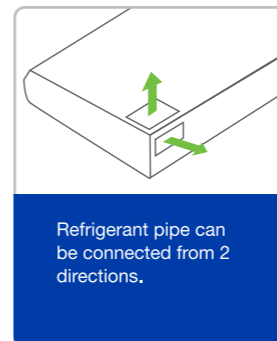


Configured with low noise high performance centrifugal fans, has big air flow and long distance air supply.

3 dimensional air supply, wide air supply angle, easily supply to every corners.

In Cooling mode, cold air is blown from horizontal. In heating mode, warm air is blown from vertical.

### Easy to install



### Two kinds of grilles for selection



## Specification

Model name	Power type	Capacity				Power input	Air flow		Sound Level	Dimension(WxHxD)		Body Weight		Connecting pipe			Standard controller
		Cooling	Heating	Cooling	Heating		M <sup>3</sup> /h	CFM		DB(A)	Packing	Body	Net	Gross	Gas	Liquid	
		kW	kBtu/h	kW	kBtu/h	kW			DB(A)	mm	mm	kg	kg	mm	mm	mm	
HECI2CFP5VB	50Hz	3.6	12.3	4.0	13.7	0.085	620	360	37-42	1130 x 765 x 330	1050 x 675 x 235	26.5	31.0	Φ12.7	Φ6.35	DN20	Remote controller
HECI5CFP5VB	50Hz	4.5	15.3	5.0	17												
HECI8CFP5VB	50Hz	5.6	19.1	6.3	21.4												
HECI24CFP5VB	50Hz	7.1	24.2	8.0	27.2	0.095	1200	706	45-51	1380 x 765 x 325	1300 x 675 x 235	32.0	37.0	Φ15.88	Φ6.52	DN20	
HECI28CFP5VB	50Hz	8.0	27.2	8.8	30												
HECI32CFP5VB	50Hz	9.0	30.7	10.0	34.1	0.160	1600	940	45-50	1750 x 765 x 325	1670 x 675 x 235	41.0	47.0	Φ15.88	Φ6.52	DN20	
HECI40CFP5VB	50Hz	11.2	38.2	12.5	42.6												
HECI48CFP5VB	50Hz	14.0	47.7	15.0	51.1	0.200	2000	1177	45-54	1750 x 765 x 325	1670 x 675 x 235	41.0	47.0	Φ15.88	Φ6.52	DN20	
HECI60CFP5VB	50Hz	16.0	54.5	17.0	58												

Notes:

1.Power supply: 220-240V/1N for 50Hz; 208-230V/the above data is for AC motor model.

2.Cooling test condition: indoor side 27°C DB, 19°C WB outdoor side 35°C DB. Heating test condition: indoor side 20°C DB, 15°C WB outdoor side 7°C DB.

3.Sound level: measured at a point 1 m in front of the unit at a height of 1.5m. During actual operation, these values are normally somewhat higher as a result of ambient conditions.

4.The above data may be changed without notice for future improvement on quality and performance.

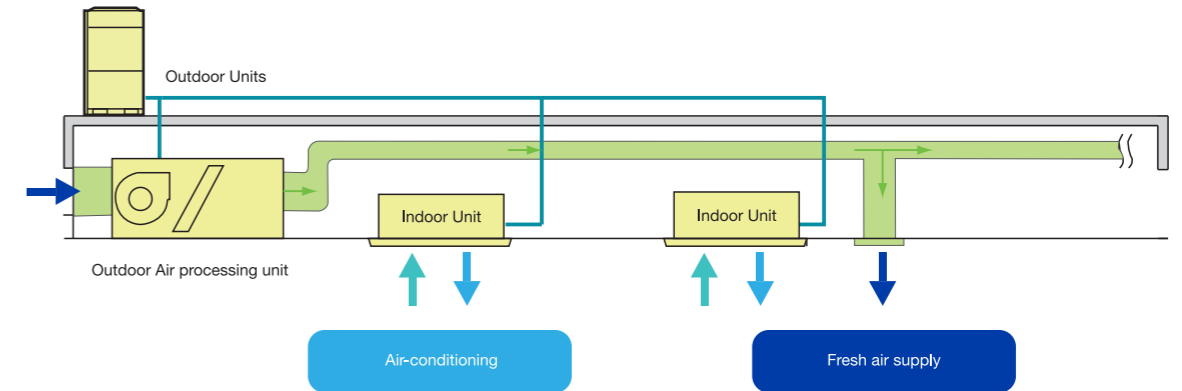
# Fresh Air Processor



## Innovative air supply technology for excellent room temperature control

Fresh air unit can be connected with other type indoor units.

Layout Example:



Notes: 1. When VRF system connect fresh air indoor unit and other type indoor units together, the capacity combination ratio between indoor unit and outdoor unit should within 100%  
2. Fresh air unit capacity can't bigger than 30% of total indoor units capacity.

## Features

### Accessories

Plenum box	Air filter	EXV	Drain pump	AC motor	DC motor
Standard	Optional	Standard	Optional	Standard	/

### Healthy and comfortable

Fresh air is imported, provides a healthy and comfortable living environment.

### 100% Fresh air processing unit

Both fresh air filtration and heating/cooling can be achieved in a single system. Indoor units and fresh air processing unit can be connected to the same refrigerant system, increase design flexibility and greatly reduce total system costs.

### High external static pressure

External static pressure can be up to 300Pa for more flexible duct applications.

## Specification

Model name	Power type	Capacity				Power input	Air flow		Sound level	ESP	Dimension (WxHxD)				Body Weight		Connecting pipe			Standard controller
		Cooling kW	Heating kW	Power input kW	Power input kbtu/h		M <sup>3</sup> /h	CFM			DB(A)	Pg	Packing mm	Body mm	Panel packing mm	Panel mm	Net kg	Gross kg	Gas mm	
HEC148DFP5VB	50Hz	14.0	47.7	9.0	30.7	0.45	1400	820	42-48	220	1245 x 445 x 655	1190 x 370 x 620	47	51	Φ15.88	Φ9.52	ODΦ25			
HEC180DFP5VB	50Hz	22.4	76.4	16.0	54.5	1.20	2000	1170	45-52	220	1510 x 490 x 870	1465 x 448 x 811	102	106						
HEC196DFP5VB	50Hz	28.0	95.5	20.0	68.2	1.20	2800	1640	45-52	220	1510 x 490 x 870	1465 x 448 x 811	/	/	Φ22.2	Φ12.7	ODΦ30	Wired controller		
HEC1155DFP5VB	50Hz	45.0	153.5	31.4	107.1	1.60	4000	3520	58	300	2200 x 710 x 1018	2165 x 676 x 916	222	260						
HEC1190DFP5VB	50Hz	56.0	191.0	39.0	133.0	2.50	6000	4700	62	300	2200 x 710 x 1018	2165 x 676 x 916	222	260	Φ28.6	Φ15.88	ODΦ32			

Notes: 1. 45kW & 56kW units' power supply are 380-415V/3N for 50Hz, the others' power supply is 220-240V/1N for 50Hz  
2. Cooling test condition: Indoor and outdoor side 33°C DB, 28°C WB. Heating test condition: Indoor and outdoor side 0°C CB, -2.9°C WB.  
3. Sound level: measured at a point 1 min front of the unit at a height of 1.5m. During actual operation, these values are normally somewhat higher as a result of ambient conditions.  
4. The above data may be changed without notice for future improvement on quality and performance.