

R290

HYUNDAI

Air to Water Heat Pump



Monoblock
R290
Air Source Heat Pump



Natural refrigerant R290

R290, a highly pure propane with zero ODP value, does not have ozone depletion potential. The low GWP value further demonstrates its environmental protection characteristics, which provides great support to reach EU carbon neutrality. Thanks to the excellent thermodynamic properties of R290 and the advanced heat pump technology, with only a small amount of R290, Monoblock R290 heat pumps show great performance under cold condition. So it is a modern solution that balances ecosystem requirements with economic performance.



Wide capacity range

Capacity (kW)		4	6	8	10	12	14	16	
Power supply	220~240V-1N-50Hz								
	380~415V-3N-50Hz					•	•	•	
Appearance									

Electric heater

Electric heater is an ideal option that balances thermal comfort with economy performance under extreme cold climate.

The electric heater with 3~9kW heating capacity can be integrated inside heat pump, which is both a installation space-saving and installation cost-effective solution.



Powerful heating



55°C hot water under -25°C
ambient temperature



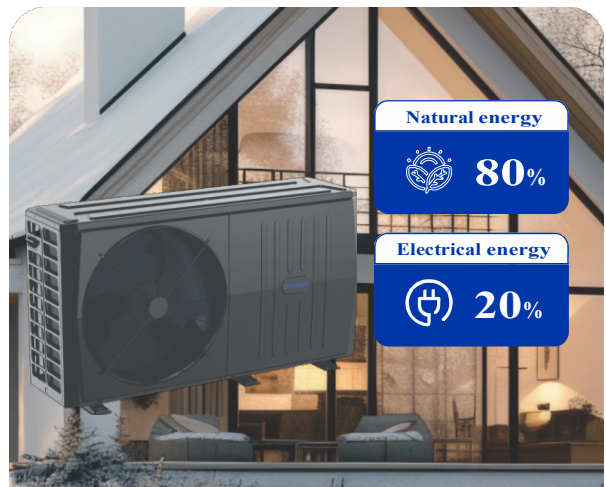
75°C hot water under -10°C
ambient temperature

Ideal for replacement

The main energy source for Monoblock heat pump is free-of-charge natural energy from the air. With only a small amount of electrical energy, Monoblock heat pump can provide heat for your house. Compared with boiler, Monoblock heat pump is a more efficient product with environmental protection. On the other hand, the powerful heating capacity of providing 75°C hot water makes it suitable for replacing or retrofitting the current heat source.



Traditional boiler heating



Heat pump heating

The data is only applied for some models under A7W35, which is for understanding and reference only.

The result may vary depending on different products.

Please refer to the specification for more details.

High reliability

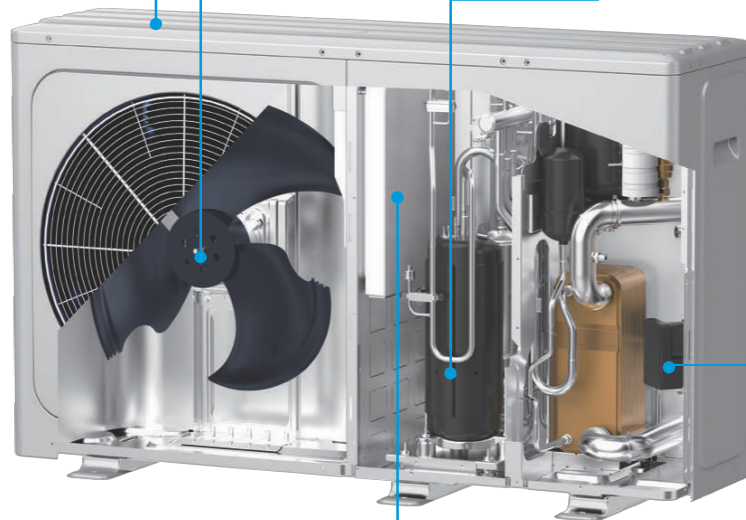
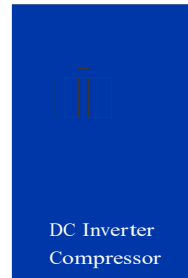
R290 Monoblock heat pump adopts well-known brand components and advanced manufacturing processes to ensure product reliability. It is worth mentioning that, in order to best reassure customers about the use of R290 heat pump, the electric control system adopts a hermetic design to further improve the overall reliability.

1. Advanced manufacturing technology



2. All DC Inverter components

DC Inverter



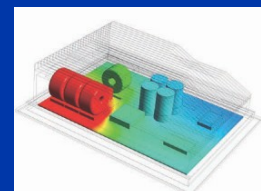
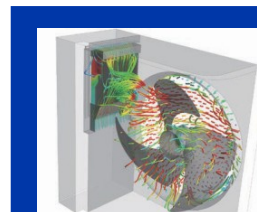
3. Hermetic electric control box



- Excellent sealability

Thanks to the special air flue design and multiple simulations, the heat dissipation rate of electric control system has been greatly improved, which provides a strong support for heat pump to run stably under -25°C ~ 46°C wide ambient temperature range

- Explosion-proof design



High efficiency

Energy efficiency label indicates the energy efficiency level and performance data of heat pump. The purpose of energy efficiency label is to provide necessary information for users to make purchase decisions, so as to help users to choose highly energy-efficient and energy-saving products. With the help of all DC inverter technology, R290 Monoblock Series reaches the EU Energy Efficiency A+++ at 35°C water temperature, A++ at 55°C water temperature, which ensures users get a better experience with a more economical and reasonable cost.

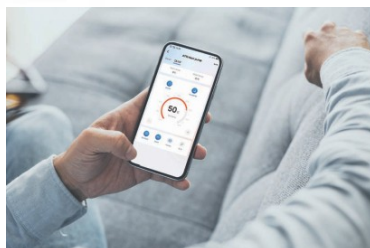


User friendly controller

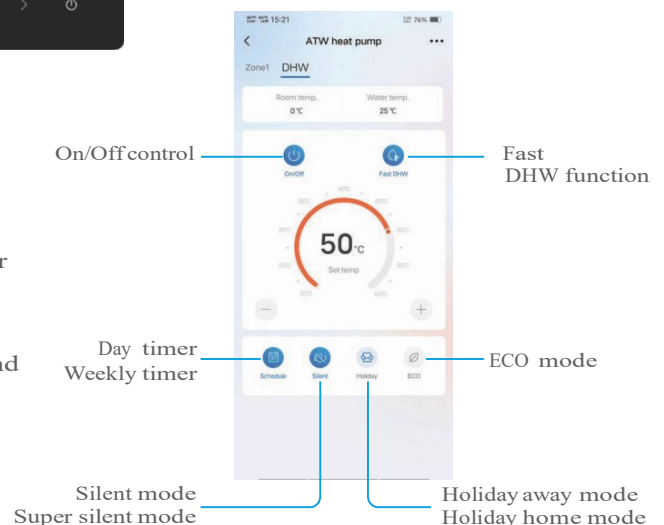


- Color screen
- Intuitive interface
- Touch-key design
- Liquid crystal display
- Built-in Wifi module
- Modbus protocol
- APP control
- Non-polarized wiring connection

iLetComfort APP



- Designed for end-user
- Easy setting
- Monitor unit status and energy consumption
- Convenient remote control



Specifications



МОДЕЛ			HYHC-V6WD2N7	HYHC-V8WD2N7	HYHC-V10WD2N7	HYHC-V12WD2N7	HYHC-V14WD2N7	HYHC-V16WD2N7	HYHC-V12WD2RN7	HYHC-V14WD2RN7	HYHC-V16WD2RN7
ВГРАДЕН ЕЛ. НАГРЕВАТЕЛ			3 kW	3 kW	3 kW	9 kW	9 kW	9 kW	9 kW	9 kW	9 kW
Power supply			220-240V-50Hz	220-240V-50Hz	220-240V-50Hz	220-240V-50Hz	220-240V-50Hz	220-240V-50Hz	380-415V-3N-50Hz	380-415V-3N-50Hz	380-415V-3N-50Hz
Heating A7W35	Capacity	W	6200	8400	10000	12000	14000	15000	12000	14000	15000
	Rated input	W	1265	1680	2128	2500	3111	3409	2500	3111	3409
	COP		4.9	5	4.7	4.8	4.5	4.4	4.8	4.5	4.4
Heating A7W45	Capacity	W	6400	8200	10000	12000	14000	15000	12000	14000	15000
	Rated input	W	1684	2130	2740	3243	4000	4478	3243	4000	4478
	COP		3.8	3.85	3.65	3.7	3.5	3.35	3.7	3.5	3.35
Heating A7W55	Capacity	W	6200	7800	9500	12000	14000	15000	12000	14000	15000
	Rated input	W	2000	2438	3115	3871	4667	5263	3871	4667	5263
	COP		3.1	3.2	3.05	3.1	3	2.85	3.1	3	2.85
Heating A2W35	Capacity	W	5600	7100	8200	9100	10800	12800	9100	10800	12800
	Rated input	W	1436	1844	2247	2395	3086	4000	2395	3086	4000
	COP		3.9	3.85	3.65	3.8	3.5	3.2	3.8	3.5	3.2
Heating A-7W35	Capacity	W	5900	7000	8000	10000	11500	12700	10000	11500	12700
	Rated input	W	2000	2333	2807	3571	4259	5080	3571	4259	5080
	COP		2.95	3	2.85	2.8	2.7	2.5	2.8	2.7	2.5
Cooling A35W18	Capacity	W	6500	8300	10000	12000	14000	16000	12000	14000	16000
	Rated input	W	1275	1612	2105	2667	3333	4103	2667	3333	4103
	EER		5.1	5.15	4.75	4.5	4.2	3.9	4.5	4.2	3.9
Cooling A35W7	Capacity	W	6800	7500	8900	11500	12700	14000	11500	12700	14000
	Rated input	W	2194	2174	2738	3770	4379	5091	3770	4379	5091
	EER		3.1	3.45	3.25	3.05	2.9	2.75	3.05	2.9	2.75
SCOP	Average climate, W35										
	Average climate, W55										
ErP sound power level	dB		58	60	61	65	65	69	65	65	69
Refrigerant	Type(GWP)										
	Charged volume	g	700	1100			1250				
Unit dimension (W×H×D)	mm		1299×717×426			1385×865×523					
Packing dimension (W×H×D)	mm		1375×885×475			1465×1035×560					
Net weight	kg		90	117			135		137		
Gross weight	kg		110	139			157		159		
Water side Connection dimension			G1" BSP		G1 1/4" BSP						
Outdoor air temperature range	Cooling	°C	-5~46								
	Heating	°C	-25~35								
	DHW	°C	-25~46								
Water setting temperature range	Cooling	°C	5~30								
	Heating	°C	12~75								
	DHW	°C	10~70								

Note:

The above data test reference standard EN14511; EN14825; EN50564; EN 12102; (EU) No:811

Ver. 202504V1EN

HYUNDAI

Air to Water Heat Pump

