



OWNER'S & INSTALLATION MANUAL AIR CONDITIONER

Please read this installation manual completely before installing the product.
Installation work must be performed in accordance with the national wiring standards by authorized personnel only.
Please retain this installation manual for future reference after reading it thoroughly.

WIRED REMOTE CONTROLLER



MFL72117604
Rev.00_050825

- ENGLISH
- ITALIANO
- ESPAÑOL
- FRANÇAIS
- DEUTSCH
- ČEŠTINA
- NEDERLANDS
- POLSKI
- PORTUGUÊS
- РУССКИЙ ЯЗЫК
- СРПАНСКИ



www.lg.com

Copyright © 2025 LG Electronics Inc. All Rights Reserved.

TIPS FOR SAVING ENERGY

Here are some tips that will help you minimize the power consumption when you use the air conditioner.

You can use your air conditioner more efficiently by referring to the instructions below:

- Do not cool excessively indoors. This may consume more electricity.
- Block sunlight with blinds or curtains while you are operating the air conditioner.
- Keep doors or windows closed tightly while you are operating the air conditioner.
- Adjust the direction of the air flow vertically or horizontally to circulate indoor air.
- Speed up the fan to cool or warm indoor air quickly, in a short period of time.
- Clean the air filter once every 2 weeks.
Dust and impurities collected in the air filter may block the air flow or reduce the cooling / dehumidifying functions.

For your records

Staple your receipt to this page in case you need it to prove the date of purchase or for warranty purposes.

Write the model number and the serial number here:

Model number : _____

Serial number : _____

You can find them on a label on the side of each unit.

Dealer's name : _____

Date of purchase _____

IMPORTANT SAFETY INSTRUCTIONS

READ ALL INSTRUCTIONS BEFORE USING THE APPLIANCE.

Always comply with the following precautions to avoid dangerous situations and ensure peak performance of your product

⚠ WARNING

This symbol indicates potentially hazardous situation which, if not avoided could result in death or serious injury.

⚠ CAUTION

This symbol indicates a potentially hazardous situation which, if not avoided, may result in minor or moderate injury.

⚠ WARNING

Installation

- For electrical work, contact the dealer, seller, a qualified electrician, or an authorized service Center.
- Do not disassemble or repair the product. There is risk of fire, electric shock, explosion, equipment malfunction, or injury.

- Request to the service center or installation specialty store when reinstalling the installed product.
 - There is risk of fire, electric shock, explosion, equipment malfunction, or injury.
- Do not disassemble, fix, and modify products randomly.
 - There is risk of fire, electric shock, explosion, equipment malfunction, or injury.
- The product shall be installed according to the national standards and local code.
- Apply totally enclosed noncombustible conduit in case of local building code requiring plenum.
- Use appropriate unit mounting procedures.
- Avoid direct sunlight.
- Avoid moist areas.

In-Use

- Do not place flammable objects close to the product.
 - There is risk of fire, electric shock, explosion, equipment malfunction or injury.
- Do not allow product to get wet.
 - There is risk of fire, electric shock, explosion, equipment malfunction or injury.

- Avoid dropping the product.
 - There is risk of fire, electric shock, explosion, equipment malfunction or injury.
- If product gets wet, contact your dealer or authorized service center.
 - There is risk of fire, electric shock, explosion, equipment malfunction, or injury. If the instructions are not followed, it may cause death or severe injury of the user.
- Do not use sharp or pointed objects on product.
 - There is risk of fire, electric shock, explosion, equipment malfunction or injury.
- Do not touch or pull the lead wire with wet hands.
 - There is risk of product breakdown or electric shock.

CAUTION

Installation

- If anyone other than a licensed professional installs, repairs, or alters LG Electronics air conditioning products, the warranty is voided.
 - All costs associated with repair are then the full responsibility of the owner.
- Do not install the unit in potentially explosive atmospheres.

In-Use

- Do not clean using powerful detergents like solvent but use soft cloths.
 - There is risk of fire, electric shock, explosion, equipment malfunction or deformation.
- Do not press the screen using powerful pressure.
 - There is risk of product break-down or malfunction.
- Safely dispose all materials in accordance with federal/state/local laws or ordinances.

TABLE OF CONTENTS

2 TIPS FOR SAVING ENERGY

3 IMPORTANT SAFETY INSTRUCTIONS

9 DESCRIPTION

9 Standard Remote Controller

9 Accessories

10 HOME

14 Operate

14 Menu

15 Mode (Air Conditioner)

16 Cooling Operation

17 Heating Operation

18 Dry Operation

19 Fan Only Operation

20 Auto operation

21 Dual setpoint auto operation

22 Power Cool Operation

23 Power Heat Operation

24 Temperature Setting

25 Check Room Temperature

26 Fan Speed Setting

27 Mode / Temperature Setting (Ventilator)

28 Fan speed setting (Ventilator)

29 Air Quality

30 Home Shortcut

31 Timer Settings

36 MENU SCREEN

37 Wind Direction

40 Sub Function

47 Sub Function (Ventilator)

48 SCHEDULE

49 Schedule List

50 Add Schedule

54 Edit Schedule

54 Delete Schedule

55 Deactivate Schedule

- 56 Set Schedule Holiday/Initialization
59 Schedule Hold (Temporary schedule)

60 ENERGY

- 60 Instantaneous Power
61 System Energy Usage
62 System Target Energy Usage
63 AI Energy Waste Alert

65 MONITORING

67 SETTINGS

- 68 General Settings
85 Air Conditioner Settings
113 Ventilation Settings
118 Service

121 INSTALLATION

- 121 Installation of Remote Controller
124 Group control
126 Air conditional and ventilation interface
127 Installer Setting
128 Air Conditioner / Ventilator Installer Settings

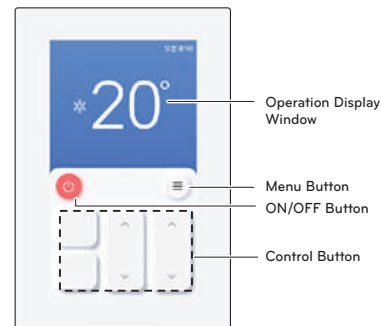
198 GUIDE TO DIFFERENT MODE OPERATION/OPEN SOURCE SOFTWARE

- 198 Different mode operation

199 OPEN SOURCE SOFTWARE NOTICE INFORMATION

DESCRIPTION

Standard Remote Controller



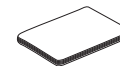
Accessories



Connection Cable
(10 M)



Fixing Screw
(4 EA)



Simple OWNERS &
INSTALLATION MANUAL

HOME (Only Air Conditioner)

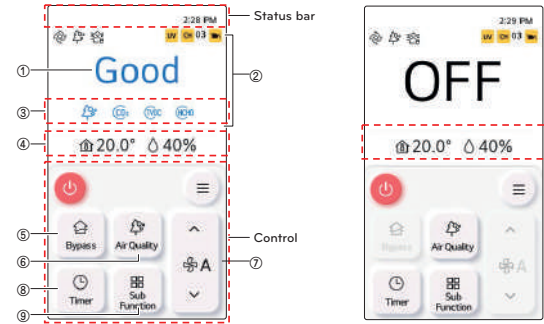
Screen Configuration



-	Description
Status Bar	Displays current time and reservation/timer/lock information
Current Status Display	Displays the current status of the remote ① Displays any running additional functions ② Displays the currently set mode ③ Displays current temperature ④ Displays warning error information
Extra Information Display	Displays the control information title and notifications
Controls	You can set control commands for each button. When entering another screen, the buttons change to buttons that match the screen. ⑤ ON/OFF: Turn power ON/OFF ⑥ Menu: Move to the Menu screen ⑦ Mode: Move to the Mode settings screen ⑧ Timer: Move to the Timer settings screen ⑨ Set temperature: Set the temperature with the UP/DOWN buttons and display the temperature ⑩ Fan speed: Set the fan speed with the UP/DOWN buttons and display the current fan speed
Display when Off	Screen entered when not operating

HOME (Only Ventilator)

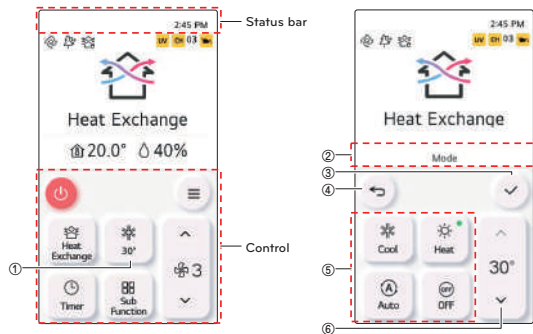
Screen Configuration



-	Description
Status Bar	Displays current time and reservation/timer/lock information
Current Status Display	Display the current status of the remote ① Overall cleanliness information for indoor air - Displays overall information regarding fine dust, CO2, TVOC and HCHO status - Displays the worst dust status level from among various dust status values ② Fine dust information display area ③ Individual sensor concentration level information ④ Indoor temperature/humidity information
Controls	You can set control commands for each button. When entering another screen, the buttons change to buttons that match the screen. ⑤ Mode : Move to the Mode settings screen ⑥ Air Quality : Provides dust sensor figure information ⑦ Fan speed : Set the fan speed with the Up/Down buttons and display the current fan speed ⑧ Timer : Move to the Timer settings screen ⑨ Sub Function : Move to the Sub Function screen
Display when Off	Screen entered when not operating

HOME (Only DX Ventilator)

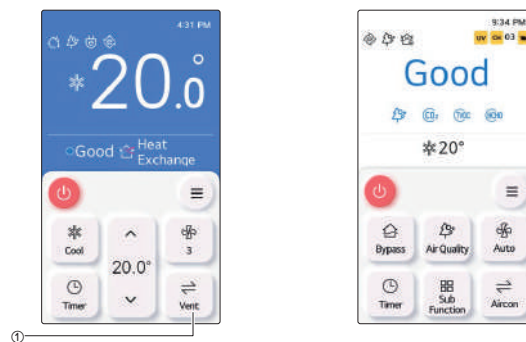
Screen Configuration



-	Description
Status Bar	Displays current time and reservation/timer/lock information
Controls	<p>You can set control commands for each button. When entering another screen, the buttons change to buttons that match the screen.</p> <p>① Air conditioner operating mode and desired temperature setting</p> <p>② Title</p> <p>③ Menu button</p> <p>④ Back button</p> <p>⑤ Air conditioner operating modes (including OFF)</p> <p>⑥ Desired temperature setting button</p>

HOME (Air Conditioner-Ventilator)

Screen Configuration



-	Description
Current status Display	<p>Display the current status of the remote</p> <p>① Air Conditioner</p> <ul style="list-style-type: none"> - Air conditioner operating modes and indoor temperature - Overall cleanliness and ventilation operating mode <p>② Ventilation</p> <ul style="list-style-type: none"> - Ventilation operating mode - Individual sensor concentration level information
Controls	<p>You can set control commands for each button. When entering another screen, the buttons change to buttons that match the screen.</p> <p>① Air Conditioner/Ventilator Home Screen Switch button</p>

Operate



If you press the button while the product is stopped, the product begins operating.



If you press the button while the product is operating, the product will stop.

Menu



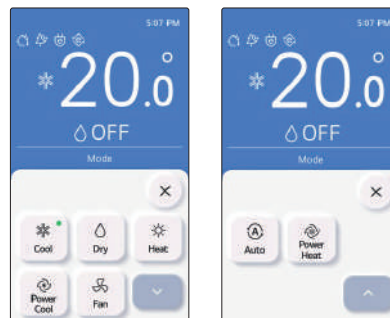
Press the menu button to enter the menu screen.

For more information on the functions, see the detailed description of each menu.

Mode (Air Conditioner)

Press the Mode button to move to the Mode selection screen. When entering the mode screen, the screen title is displayed at the top.

If you press the close button without selecting a mode, you move to the Home screen without changing the mode.



Operation	Description
	Cool the room to the desired temperature.
	It removes the moisture with cooling.
	Heats the room to the desired room temperature.
	Fan only operation, no cooling or heating.
	The product automatically provides the appropriate fan speed based on the temperature of the room.
	It provides strong cooling in short time.
	Power heating increases indoor temperature quickly.

Cooling Operation

Cooling operation's minimum setting temperature is 18 °C (16 °C).

For some types of the indoor units, the desired temperature can be controlled in the units of 1 °C or 0.5°C.

- Set the desired temperature lower than the indoor temperature.
- Indoor temperature is displayed on the default screen of the remote controller.
- If the room temperature is lower than the setpoint the unit will remain in cool mode (thermal off). The unit will go into cool mode (thermal on) when the room temperature is greater than the setpoint.
- If the unit is operating in cooling mode and the On/Off button is pressed, the cooling operation will shut off.



What is 3 minute delay function?

This function protects the compressor. After achieving cooling thermal satisfied, a 3-minute delay is enforced prior to the next thermal cooling call.

! NOTE

In the cooling operation, you can select the desired temperature in the range of 18 °C ~ 30 °C (16 °C ~ 30 °C).

The favorable temperature difference between the indoor temperature and the outdoor temperature is 5°C.

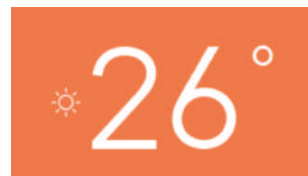
When region setting is set to UAE, the range of desired temperature will be 20 °C ~ 30 °C.

Heating Operation

The heating operation's minimum setting temperature is 16 °C.

For some types of the indoor units, the desired temperature can be controlled in the units of 1 °C or 0.5 °C.

- Set the desired temperature higher than the indoor temperature.
- Indoor temperature is displayed on the default screen of the remote controller.
- If the room temperature is greater than the setpoint the unit will remain in heat mode (thermal off), and the fan may continue to run to recirculate the air. The unit will go into heat mode (thermal on) when the room temperature is less than the setpoint.
- If the unit is operating in heating mode and the On/Off button is pressed the heating operation will shut off.



! NOTE

In the heating operation, you can select the desired temperature in the range of 16°C ~ 30°C. Heating operation is operated only in cooling/heating model. The heating is not operated in cooling exclusive model.

Dry Operation

Dry operation's initial fan speed is "Low".

Dry operation does not have a separate desired temperature.

- If the unit is operating in fan only mode and [On/Off] button is selected, then the unit will stop.



! NOTE

If dry mode is used in the rainy season, or when the humidity is high, the unit can have both the effective dehumidification and cooling operation at the same time.

Fan Only Operation

Fan only operation's initial fan speed is "High".

Fan only operation does not have a separate desired temperature.

- If you unit is operating in fan only mode and you press the [On/Off] button the the unit will stop.



! NOTE

It provides the Fan only operation without temperature control, with recirculation of indoor air.

Auto operation

Auto operation's initial desired temperature is 25 °C.

The cooling exclusive model's initial desired temperature is "It's Fine".

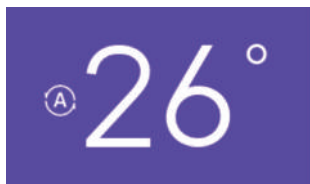
Cooling/heating model's desired temperature can be controlled in the units of 1 °C or 0.5 °C.

For cooling exclusive model, the value can be controlled from "hot" stage to "cold" stage.

- Hot
- A little hot
- It's fine
- A little cold
- Cold

- Cooling/Heating model, auto mode automatically manages room temperature based on set temperature and provides a comfortable environment.

- If the unit is operating in ai/auto mode and the On/Off button is pressed the ai/auto operation will turn off.



! NOTE

If the product is a cooling/heating model, in the auto operation, the desired temperature can be selected in the range of 18 °C ~ 30 °C.

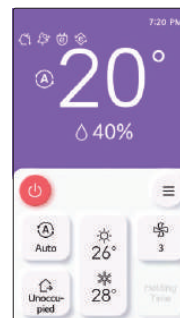
If it does not operate as you wish, select another operation mode.

When region setting is set to UAE, the range of desired temperature will be 20 °C ~ 30 °C.

Dual setpoint auto operation

The indoor unit automatically manages room temperature with extended heating and cooling setting temperature ranges.

Dual setpoint auto mode can be set in the USER SETTING. This is recommended in North America region.



Operation Mode		Setting Temperature
Auto	Cool	10~37.5 °C (50~99 °F)
	Heat	4~32 °C (40~90 °F)

! NOTE

- Auto heating function only operates on cooling and heating models
- Auto heating function doesn't operate on cooling only models.

Power Cool Operation

Power cooling quickly lowers the indoor temperature.

Desired temperature: 18 °C

Fan speed : Power fan speed

Fan direction: Current fan direction

- During the power cooling, if fan speed or desired temperature is changed, the power cooling is cleared, and it operates in the cooling operation mode.
- During the power cooling, if you press [On/Off] button, the power cooling operation stops, and when you press [On/Off] button again, it operates in the cooling operation mode.



Power Heat Operation

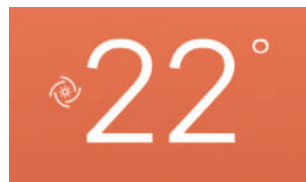
Power heating increases indoor temperature quickly.

Desired temperature: 30 °C

Fan speed: Power fan speed

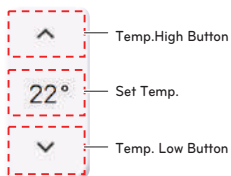
Fan direction: Current fan direction

- If you adjust the fan speed or the desired temperature during power heating, the function is disabled and heating operation mode is activated.
- If you press [On/Off] button during power heating, the function stops and if you press [On/Off] button again, heating operation mode is activated.



Temperature Setting

You can set the desired temperature by pressing the temperature UP/DOWN button. It shows you the set desired temperature.



Mode	Description
Cool	If the desired temperature is higher than the indoor temperature, cooling is not performed. Set the desired temperature lower than the indoor temperature. You can select in the range of 18 °C ~ 30 °C (16 °C ~ 30 °C).
Heat	If the desired temperature is lower than the indoor temperature, heating is not performed. Set the desired temperature higher than the indoor temperature. You can select in the range of 16 °C ~ 30 °C.
Auto	For cooling/heating product, you can select in the range of 18 °C ~ 30 °C. For cooling exclusive product, you can select Hot, A little hot, Adequate, A little Cold, and Cold. For dual setpoint, the temperature range for cooling mode is 10~37.5 °C and heating mode is 4~32 °C.

! NOTE

When region setting is set to UAE, the range of desired temperature for Cool and Auto mode will be 20°C ~ 30°C.

Check Room Temperature

You can check the current indoor temperature.

- In the remote controller's main screen, you can check the indoor temperature.



! NOTE

The temperature distribution in the remote controller installation space is not uniform, so there can be a little difference between the temperature you actually feel and the remote controller's room temperature display

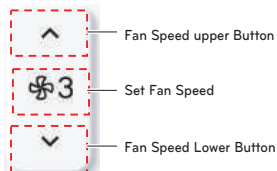
According to Control type setting value

- Single setpoint
 - Fahrenheit: 52~99 °F
 - below 52 °F: display 'LO'
 - over 99 °F: display 'HI'
 - Celsius: 10.5~39.5 °C
 - below 10.5 °C: display 'LO'
 - over 39.5 °C: display 'HI'
- Dual setpoints
 - Fahrenheit: 34~99 °F
 - below 34 °F: display 'LO'
 - over 99 °F: display 'HI'
 - Celsius: 0.5~39.5 °C
 - below 0.5 °C: display 'LO'
 - over 39.5 °C: display 'HI'

Because of location of Temperature sensing, the real room temperature and the this displayed value can be different.

Fan Speed Setting

You can set the fan speed by pressing the fan speed UP/DOWN button. It shows you the set fan speed.



⊕ 1	Super Low
⊕ 2	Low
⊕ 3	Middle
⊕ 4	High
⊕ 5	Power
⊕ A	Auto

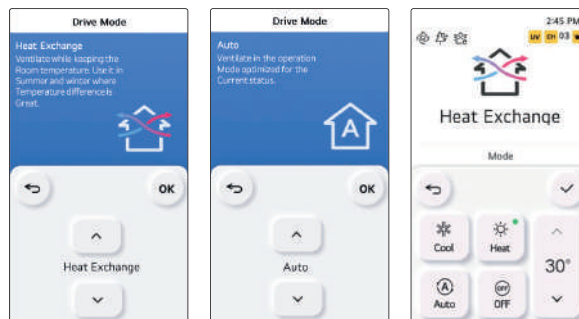
NOTE

For some product some fan speed may not be available.

Mode / Temperature Setting (Ventilator)

Ventilation (general and direct cooling type ventilation) operation mode supports the following operation modes.

※ Some products may not support some operation modes.



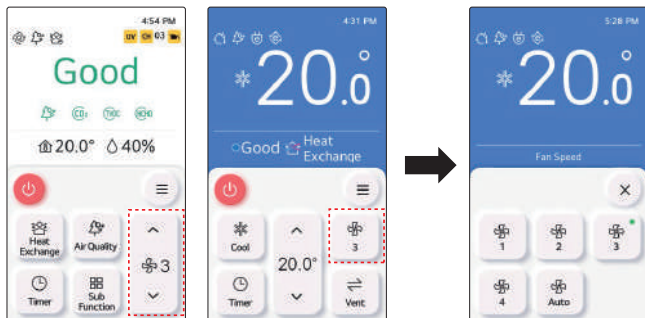
Mode	Classification	Description
Auto		It measures the ventilation system's indoor temperature and the outdoor temperature for the automatic operation in the optimal ventilation mode state.
Heat Exchange	Ventilation operation mode - commonly supported by ventilation products	It is the mode of ventilation with both supply / discharge through the heat exchanger. It is adequate to use in summer/winter where the indoor/outdoor temperature difference is big.
Bypass		It is the ventilation where the exhausted air is ventilated without going through the exchanger. It is adequate to use in spring/fall or when the indoor contamination is severe.
Cool		Cools down the room to desired temperature
Heat		It provides warm air to the room.
Auto	Air conditioner operation mode - supports direct cooling type ventilation	The product automatically provides the appropriate fan speed based on the temperature of the room.
Stop		It stops the product's air conditioner operation.
Temperature		The desired temperature can be set using the Up and Down buttons, and the set temperature can be checked.

※ The direct cooling type ventilation's air conditioner operation mode is composed separately from the ventilation operation mode.

Fan speed setting (Ventilator)



You can easily control the desired fan speed.

※ The auto Fan can be used only when the air contamination (CO₂, TVOC) sensor is installed.



<Ventilator>

<Air Conditioner-Ventilator>

Classification	Description
	When the Fan Speed button is pressed, you will move to the Fan Speed Setting screen.
	By pressing the Switch button, you can switch between air conditioner and ventilation home screens.

Air Quality

When you press the Air Cleanliness button, the detailed air cleanliness pop-up window will appear.



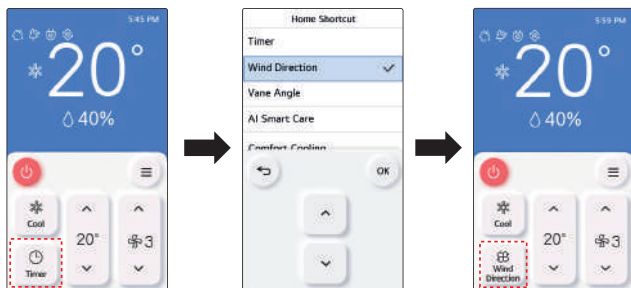
Classification	Description
Dust sensor information	- You can check the installed sensor information. - You can check the dust sensor status through figures and color level values.
Color guide	Guidance on indicators per color is provided. (Display 4 levels or 6 levels depending on the installer's settings.)

Home Shortcut

The Home Shortcut function places frequently used functions on the home screen.

When you press and hold down the Timer button on the Home screen for 5 seconds, you will move to the screen where you can select the functions.

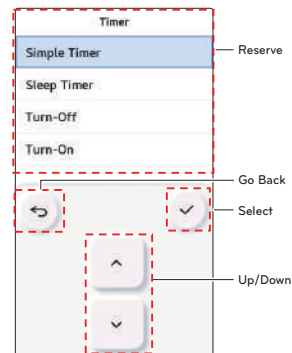
By selecting the desired function and pressing the OK button, you can change the function on the home screen to the selected function.



Timer Settings

When you press the timer button, you move to the screen where you can reserve a time.

You can move to the details screen by selecting the menu you want to set in the timer settings screen.



- Simple Timer : Easily schedule when to turn the product on or off.

! NOTE

- If the product is on, it turns off after the set time has passed.
- If the product is off, it turns on after the set time has passed.
- If the product is turned on or off before the simple timer begins operating, the set timer is canceled.

- Sleep Timer: Turn the air conditioner on or off in sleep mode after a certain period before sleeping.

! NOTE

- The sleep timer can be set while the product is operating.
- If the product is turned off before the sleep timer begins operating, the set timer is canceled.

- Turn-OFF: The product automatically turns off when it reaches the reserved time.

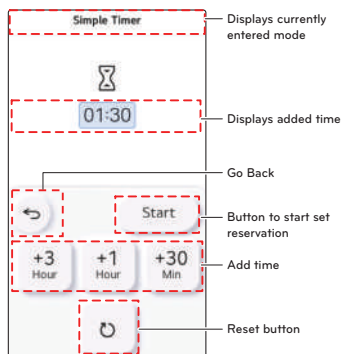
- Turn-ON: The product automatically turns on when it reaches the reserved time.

! NOTE

- The Turn-ON timer is not canceled even if the product turns on or off before the timer begins operating.

Simple / Sleep Timer

Press the UP/DOWN button to select the reservation mode and then press the OK button to enter the reservation mode you want.



- You can add to the reservation time by pressing the Add time buttons. Set the time you want and press the Start button to activate the reservation and move to the Home screen.



- You can add time equal to the time of the button (3 Hr. / 1 Hr. / 30 Min).

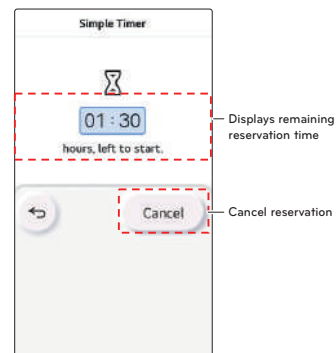
- If the product is operating, the product will stop after the added time. If the product is stopped, the product will begin operating after the added time.

NOTE

The reservation time cannot exceed 7 hours. If exceeded, a notification popup will appear. If you press Go Back while setting the time, the settings will not be saved and you will move to the previous screen.

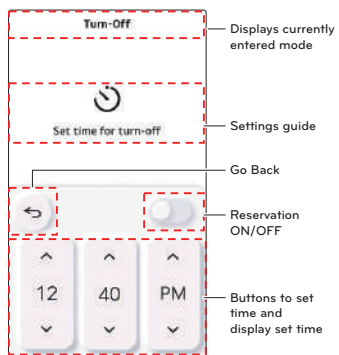
- When the reservation is activated, the Add time buttons disappear and the current status is displayed as on the screen below.

- When you press the cancel reservation button, the reservation is canceled and you move to the initial timer screen.



Turn ON / OFF

Press the UP/DOWN button to select the reservation mode and then press the OK button to enter the reservation mode you want.



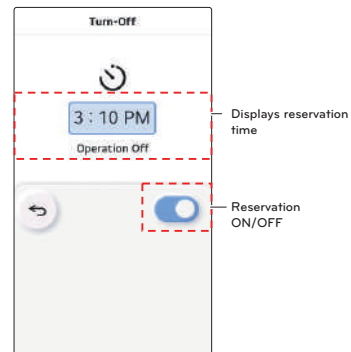
- You can set the on/off time by pressing the buttons to set the time. After you've set the time you want, press the reservation ON/OFF button to activate the reservation and move to the Home screen.

! NOTE

When setting the time, it can be set in 10-minute increments.

When the reservation is activated, the buttons to set the time disappear and the current status is displayed as on the screen below.

When the reservation changes from ON to OFF, the reservation is canceled and you move to the initial timer screen.



! NOTE

You can set to Turn OFF in the same way.






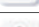
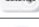
You can check the current reservation status in the Status Bar at the top of the Home screen.



MENU SCREEN

Press the menu button on the Home screen to move to the Menu screen.



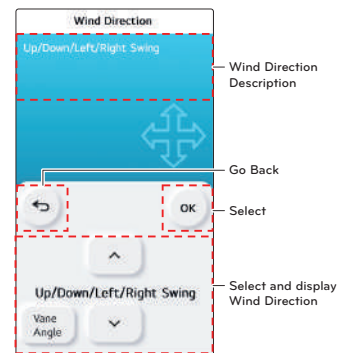
Menu Button	Description
	Press the button to go to the Wind Direction selection screen.
	Press the button to go to the Sub Function screen.
	Press the button to go to the Schedule setting screen.
	Press the button to go to the Energy Monitoring screen.
	Press the button to go to the Monitoring screen.
	Press the button to go to the Settings screen.
	Press the close button to return to the Home screen.

Wind Direction

Press the Wind Direction button on the menu screen to move to the related screen.

Select the Wind Direction you want using the \vee and \wedge buttons and then press the OK button to return to the Home screen.

Descriptions of each wind direction can be found on the selection screen.

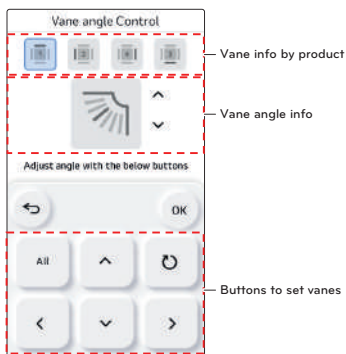


NOTE

This function is not supported for some products.

Vane Angle Control

You can control the angle at which the fan blows.



Menu Button	Description
	Select to set all vanes at the same time
	Set to control each vane individually
	Select vane during individual control
	Set the angle of the selected vane
	Standard control button Fix all vanes to Step 3

! NOTE

These functions are not supported in products without vanes.

Vane info by product

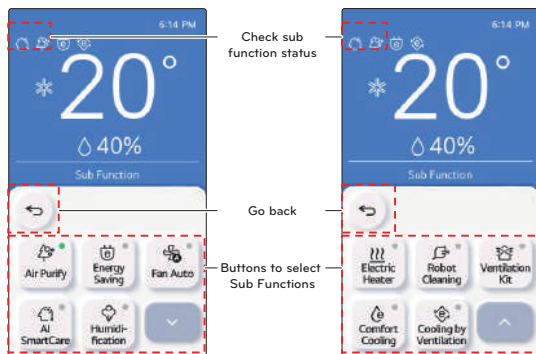
Icon	Description
	1-vane 1 Control - When connecting an indoor unit with one vane - When all vanes are simultaneously selected with the All button - When fixing all vanes to Step 3 with the standard control button
	2-vane 2 Control - When connecting an indoor unit with two vanes
	4-vane 2 Control - When connecting an indoor unit with four vanes, the top and bottom vanes and the left and right vanes are controlled together (Individual control not possible)
	4-vane 4 Control - When connecting an indoor unit with four vanes (Individual control)



Vane angle info

Icon	Description	Icon	Description
	Step 1		Step 4
	Step 2		Step 5
	Step 3		Step 6

Sub Function

Press the Sub Function button on the menu screen to move to the related screen. You can activate/deactivate the Sub Function by pressing the corresponding button.



Menu Button	Description
	Sub Function is activated
	Sub Function is deactivated

Air Purify Setting

It makes the indoor air clean and pleasant.



! NOTE

The air purify function is an additional function, and it may not be displayed/operated in some products.

If you want air purify single operation, set air purify in the wind only operation.

Fan Auto Setting

This is a function to set the indoor unit fan control when the outdoor unit thermal off after reaching the product target temperature.

- When set to Deactivated : In cooling mode, the fan operates at low fan speed, and during heating, the fan operates periodically to remove latent heat.
- When set to Activated : The fan stops when the outdoor unit is Thermal Off, and operates at the set fan speed when Thermal On.



! NOTE

The fan auto function is an additional function, and it may not be displayed/operated in some products.

AI Smart Care

This is a function that uses AI to manage the indoors pleasantly and save energy.



! NOTE

- When the AI Smart Care runs, it is displayed on the upper left of the main screen.
- When the operation conditions do not match the AI Smart Care, the standby status is displayed on the Monitoring screen.
- The AI Smart Care may not be displayed/run in some products.
- The AI Smart Care only runs when the product is cooling or heating.
- You may feel that cooling or heating are weak due to the power saving operation of the AI Smart Care.
- Set the date and time precisely for the remote control and the central controller when installing the AI engine.
- If you do not set the date and time, it may display an incorrect result value.
- The site connected to our central controller prioritizes the date and time settings of the central controller above those of the wired remote control.
- If a model for both cooling/heating, the AI Smart Care is not available during simultaneous cooling and heating operation.

Electric Heater Setting

It is the function to reinforce the heating capability by turning on the electric heater during the heating operation.



! NOTE

It can be set only in the heating operation.

The heater function is an additional function, and it may not be displayed/operated in some products.

Ventilation kit Setting

Function enables operation of an optional ventilation kit with indoor units



! NOTE

The ventilation kit function is an additional function, and it may not be displayed/operated in some products.

Comfort Cooling Setting

The comfort cooling is the function to automatically control the cooling strength to maintain the pleasant feeling without turning off the product after the indoor temperature reached the desired temperature.



! NOTE

The comfort cooling function is an additional function, and it may not be displayed/operated in some products.

The comfort cooling function is only possible when the product is in the cooling operation.

Energy Saving Setting

The energy saving cooling function is the function to control the desired temperature during the cooling operation to improve the comfort of the user and to improve the power saving performance.



! NOTE

The energy saving function is an additional function, and it may not be displayed/operated in some products.

The energy saving function is possible only when the product is in the cooling operation.

Humidification setting

It is the function to activate the humidifier installed in the product when the indoor air is dry.

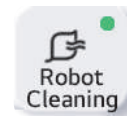


! NOTE

The humidification function is an additional function, and it may not be displayed/operated in some products.

Robot Cleaning Setting

Robot cleaning function is the function to automatically perform the filter cleaning with the cleaner in the product when the air conditioner is used for certain period of time.



! NOTE

- It can be set 30 seconds after the operation stopped.
- The robot cleaning function is an additional function, and it may not be displayed/operated in some products.

Cooling by Ventilation

A function to save energy by using cool outdoor air during the cooling operation with the ventilation product interlocked.



! NOTE

- The ventilation-interlock power-saving cooling function is an additional function which may not appear/work in some products.
- The ventilation-interlock power-saving cooling function can work only when the air conditioner is operating for cooling and ventilation is operating.

Sub Function (Ventilator)

You can change the additional operation of the ventilation product.

Fast

It ventilates in short period of time.

It is the function to operate the ventilation function more efficiently through the express setting which is an additional operation of the ventilation product.



Energy saving

It performs the energy saving function while ventilating efficiently.

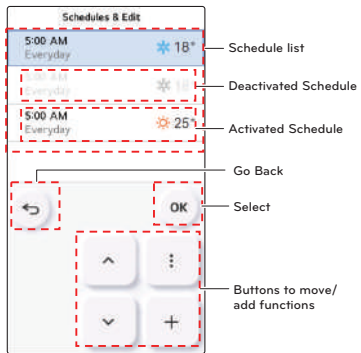
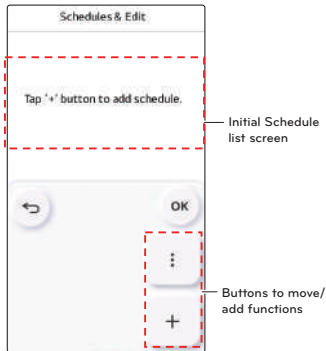


! NOTE

- The general ventilation and the direct cooling type ventilation's additional operation are the same.
- The ventilation product's additional functions (air purify / heater / humidification / fan auto) setting methods are the same as the air conditioner.

SCHEDULE

Press the Schedule button to go to the settings screen.





Schedule List


Displays a summary of the mode/set temperature and schedule settings.

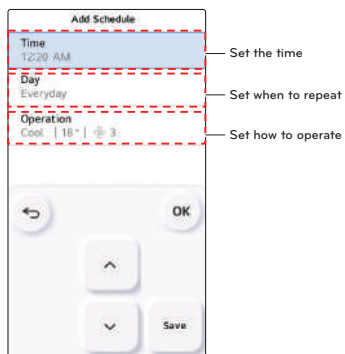
You can set up to 30 of them in the order they were added.


- Select the list you want with the ∇ and \wedge buttons and then press the OK button to move to the Edit Schedules screen for the selected list.

Button	Description
	Additional functions - You can activate the additionally supported functions screen.
	Add - Move to the Add schedule list screen.

Add Schedule

Press the button  on the Schedule settings screen to move to the Add Schedule screen. Select the list you want with the ∇ and \blacktriangle buttons and then press the OK button to move to the Edit Schedules screen for the selected list.

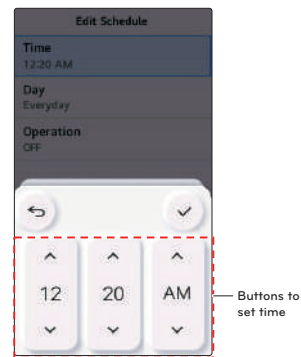


Button	Description
	Save Schedule - You can save the set schedule content.

Set the Time

You can set the time.

Select the time you want with the ∇ and \blacktriangle buttons and then press the OK button to move to the Edit Schedules screen. The time setting rounds up to 10 minutes.

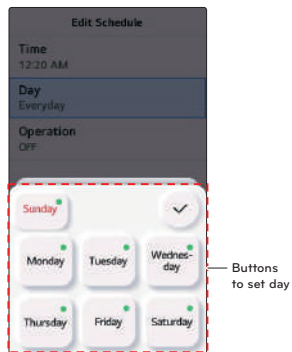


Set when to Repeat

You can repeat the Schedule.

Select the button of the days you want and press the "OK" button to move to the Edit Schedules screen.

- Default is displayed as Everyday.
- When set Monday to Sunday, "Everyday"
- When set Monday to Friday, "Weekday"
- When set Saturday to Sunday, "Weekend"
- When set to a specific day of the week, lists the days

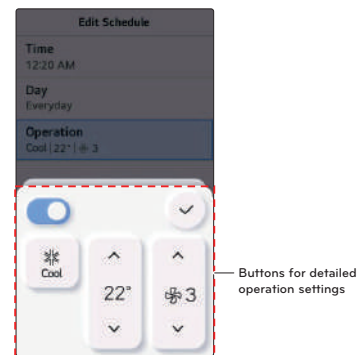


Set how to Operate

You can set the detailed operation of the schedule.

- After setting the mode, desired temperature, and fan speed, press the OK button to move to the Edit Schedules screen.

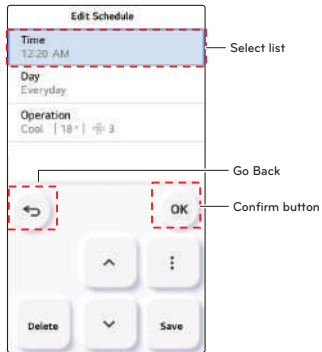
- After setting the time, repetition, and operation, press the Save button on the Edit Schedules screen to add it to the Schedule list.



Edit Schedule

If you need to edit the set schedule, select it from the Schedule list and press the "OK" button to move to the Edit Schedules screen.


- Move to the list, set the same way you add a schedule, and then press the Save button to finish editing the schedule.

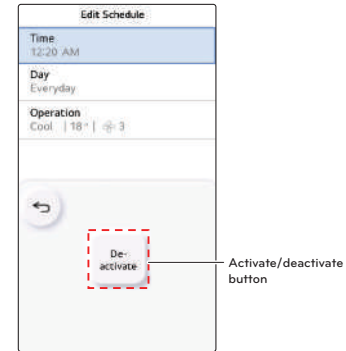


Delete Schedule


When you move to the list of the schedule you want to delete and press the Delete button, a popup will appear to delete the schedule. Press the OK button to delete the list.

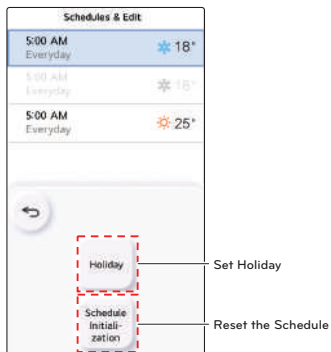
Deactivate Schedule



Press the  button on the Edit Schedules screen to activate or deactivate the selected Schedule list.



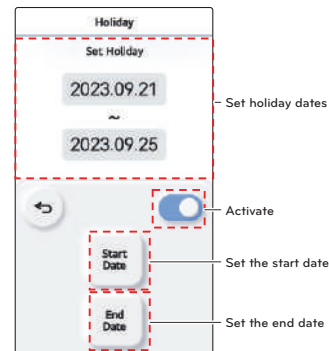
Set Schedule Holiday/Initialization



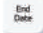
Press the  additional functions button on the Schedule list screen to move to the screen where you can set additional functions.



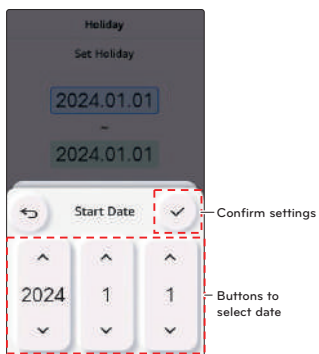
Button	Description
	Set Holiday - Move to the Holiday setting period screen.
	Reset the Schedule - Resets the saved Schedule list.

Press the Set Holiday button to move to the settings screen.



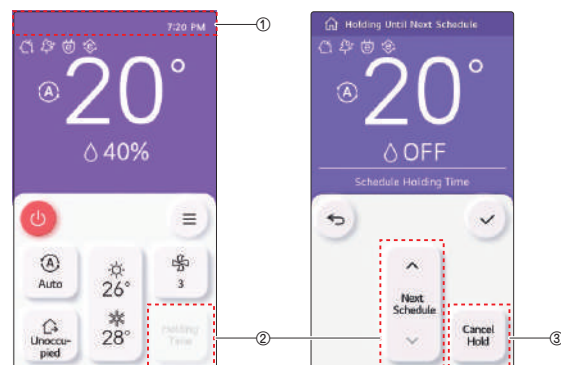
Button	Description
	Activate Holiday button - Activate/Deactivate
	Set the start date - Move to the screen to set the start date.
	Set the end date - Move to the screen to set the end date.

Select the set the start/end date buttons to move to the date settings screen.
 - After selecting the year, month, and day, press the OK button to set the date.



Schedule Hold (Temporary schedule)

The currently operating schedule is paused and another operation mode temporarily operates.



① Displays the type of schedule hold.

② Displays the duration of the schedule hold function. Select to set the time.

Function Name	Option
Schedule Holding Time	Next Schedule, 30 minutes, 1 Hour, 1 Hour 30 minutes, 2 Hour, 2 Hour 30 minutes, 3 Hour, 4 Hour, Permanently

③ Select to release the schedule hold.

! NOTE

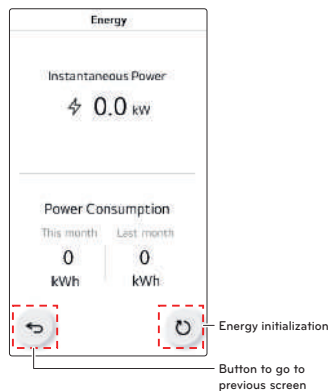
- If any one of the four items (mode / set temp / reservation mode / flow rate) is changed, the schedule hold function starts.
- The type of schedule hold is determined by the changed item.
- The operation time of schedule hold is based on the set time in the current time of the remote controller.
- If you want to change the holding time, select the time in schedule hold.

ENERGY

Press the Energy button on the menu screen to move to the related screen.

Instantaneous Power

- On the Energy screen, you can check the current amount of power consumed, this month's accumulated usage, and last month's accumulated usage.



NOTE

Depending on the product type, some functions may not be displayed or available. It may be somewhat different from the actual amount of power consumed, so use it only as a reference.

System Energy Usage

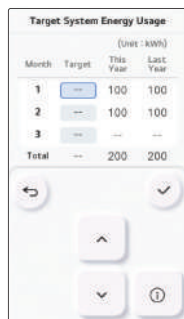
This is a function that allows you to check the predicted savings from using AI Smart Care and the system's overall energy consumption.



- When using "AI Smart Care", you can check this month/year's savings rate as calculated by the AI controller.

System Target Energy Usage

Select the target consumption of the month for which you want to set the system target power consumption to move to the target consumption settings screen.

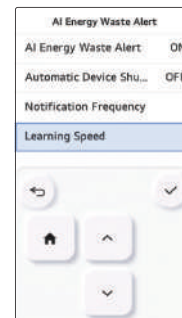
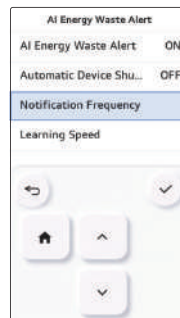
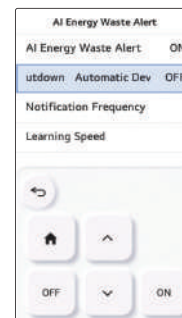
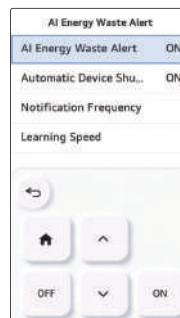


NOTE

- There may be some difference between the actual usage, so use it only as a reference.
- Setting too small a target as the desired level of power consumption for the system may result in poor cooling/heating performance.
- When setting the AI Energy Management function in the central controller, the Setting Target energy usage and Setting System Target Energy Usage function of the wired remote controller cannot be used.
- If a model for both cooling/heating, the System Target Energy Usage function is not available during simultaneous cooling and heating operation.

AI Energy Waste Alert

The "AI Energy Waste Alert" function learns the user's usage patterns and saves power through a notification/off function when an operation pattern that is different from usual is detected.



- When setting "Energy Waste Alert" through usage, you can set "Automatic Device Shutdown" ("Use"/"Not Use"), "Notification Frequency (Frequent/Normal/Minimal)", and "Learning Speed(Fast/Normal/Slow)"

- A pop-up window will appear when energy waste is detected. If the "Automatic Device Shutdown" setting is set to "Not Use", a pop-up window will appear with the message, "The air conditioner is being used differently than usual. It was turned off to save energy." If the "Automatic Device Shutdown" setting is set to "Use", a pop-up window will appear with the message, "The air conditioner is being used differently than usual. It was turned off to save energy.", and the operation will be stopped.

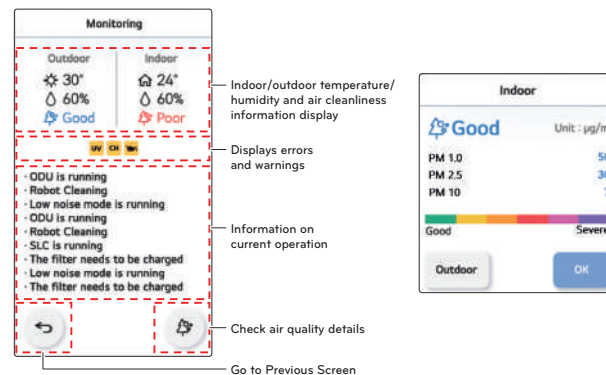
- If more than 70% of power has been used, a message saying, "The current electricity usage exceeds 70% of this month's target amount. At 100% of the target usage, the power saving mode starts and the cooling function is turned down." will be displayed in the pop-up window. After learning the AI recommended electricity amount is completed, a message saying, "To save energy, AI recommends a target amount for electricity usage. Use the AI Energy Management to achieve this target and save energy." will be displayed in the pop-up window

NOTE

- The heater needs to have learned your usage pattern to activate the "AI Energy Waste Alert" function. This function will operate once usage pattern learning is complete.
- The higher the "Pattern learning rate" is set, the more new patterns will be learned, even if the difference from previously learned patterns is small.
- The higher the "Energy Waste Alert" is set, the faster the heater will learn new usage patterns when your usage patterns change.
- The message displayed may vary depending on your remote control version and product.

MONITORING

Press the Monitoring button on the menu screen to move to the related screen.



On the Monitoring screen, you can check information about current humidity, air quality, and product operation.

You can check if the product has any problems through the error and warning icons.

Icon	Description
	Displayed when a product error occurs
	Displayed when an UVnano-related error occurs
	Displayed when a GHP Oil-related error occurs

NOTE

Depending on the product, this function may not be supported.

- Press the button to show a popup where you can check detailed information on air quality.



Press the OK button to exit the popup and move to the previous screen.

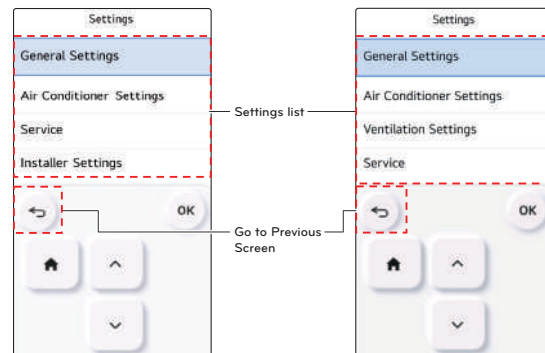
NOTE

The color guide can be changed in Installer Settings.
Depending on the product, this function may not be supported.

SETTINGS

Press the Setting button on the menu screen to move to the Settings screen.

- Select the list you want with the ∇ and \blacktriangle buttons and then press the OK button to move to the screen for the selected list.



<Air Conditioner - Ventilator>

Icon	Description
	Return to Home screen

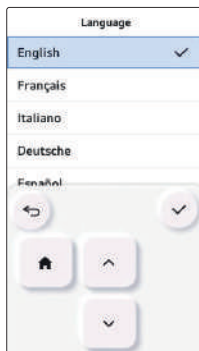
General Settings

You can select general settings such as time, and units and change them as you want.

- Select the list you want with the ∇ and \wedge buttons and then press the OK button to move to the screen for the selected list.

Language setting

Set the language to be displayed on the remote controller.



Language		
한국어	English	Français
Deutsche	Italiano	Español
Русский	Polski	Português
中文	Čeština	Türkçe
Українська		

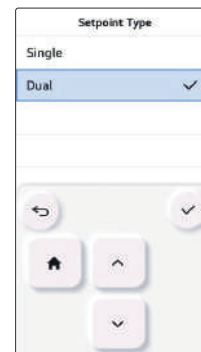
! NOTE

Some products may only support certain languages.

Setpoint Type Setting

You can set the desired temperature setting method to single or dual.

- Single type: You can set the desired temperature of only one operating mode.
 - If you choose to operate cooling, you can only set the desired temperature for cooling.
 - If you choose to operate heating, you can only set the desired heating temperature.
- Dual type: You can set the desired temperature of cooling and heating operation modes at the same time.
 - It is recommended for customers who are accustomed to using North American thermostats.



! NOTE

- When the setpoint type is set to Dual, the ventilation setting is unavailable.
- "Setpoint type" may not be displayed in some products.

Temperature Unit Setting

Set the temperature unit displayed on the remote controller.

- In the user setting list, select the temperature unit setting category, and press [OK] button to move to the detail screen.



Buttons for setting temperature unit and minimum unit of display

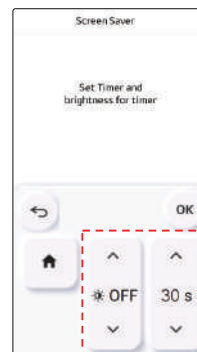
NOTE

The temperature unit function may not work or work differently in some products. You cannot set the temperature unit in the slave wired remote controller.

Screen Saver

You can set the brightness of the screen when entering the standby screen and how long before entering the standby screen when there is no operation.

- Brightness can be set to 4 levels: OFF / 10% / 20% / 30%.
- The standby screen entry time can be set to 3 levels: 15s / 30s / 60s.

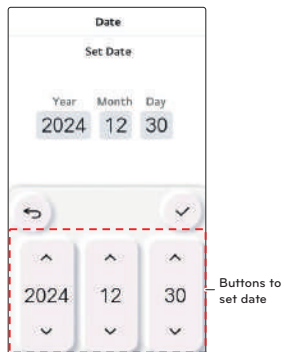


Buttons to adjust brightness and time

Date Setting

Set the date displayed on the remote controller.

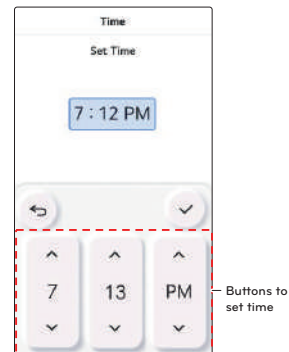
- In the user setting list, select the date category, and press [OK] button to move to the detail screen.
- After the setting, if you press [OK] button, the setting is saved and moves to the previous screen.



Time Setting

Set the time displayed on the remote controller.

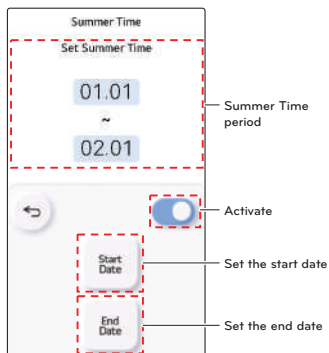
- In the user setting list, select the time category, and press [OK] button to move to the detail screen.
- After the setting, if you press [OK] button, the setting is saved and moves to the previous screen.
- Set the time and press the OK button to finish setting the time.






Summer Time Setting

Set the daylight savings time dates in the remote controller.

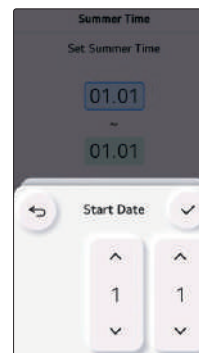
- In the user setting list, select the summer time setting category, and press [OK] button to move to the detail screen.
 - Summer time: The system to advance the time by 1 hour from the spring when the day is longer and return back in the fall when the day gets shorter.
 - When it becomes AM 02:00 on the DST start date, the current time changes to AM 03:00, and when it becomes AM 02:00 of the DST end date, the current time changes to AM 01:00.



Button	Description
	Activate Summer Time period - Activate/Deactivate - If the set period passes, it is automatically deactivated.
	Set the start date - Move to the screen to set the start date.
	Set the end date - Move to the screen to set the end date.

Select the set the start/end date buttons to move to the date settings screen.

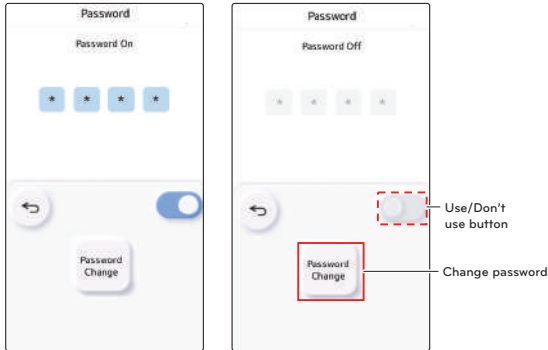
- After selecting the year, month, and day, press the OK button to finish setting the date.


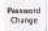


Password Setting

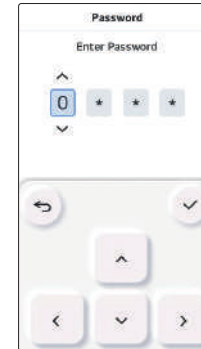
Set the password to prevent unauthorized change to remote controller settings.

- Select the user password setting category, and press [OK] button to move to the detail screen.



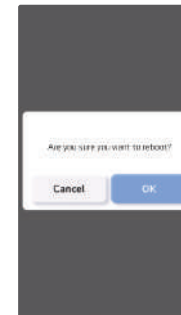
Button	Description
	Use/Don't use password - Use/Don't use
	Change password - Move to the change password screen.

- After setting, you can enter the password from 0 to 9 with the V and ^ buttons and then move between the digits with the < and > buttons.
Press the OK button to save the password.



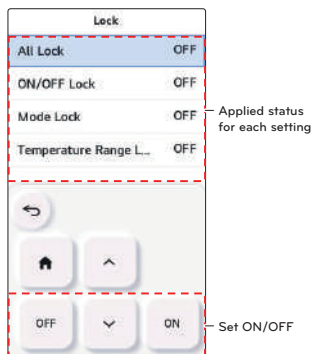
Reboot

- You can reboot the system. Press the OK button in the popup to reboot the system.



Lock Setting

- It is the function to lock the button operation of the remote controller so that children or other persons cannot use it without permission.
- Temperature range lock is the function to limit the desired temperature range that can be set in the wired remote controller.



Button	Description
	Activate the selected list
	Deactivate the selected list

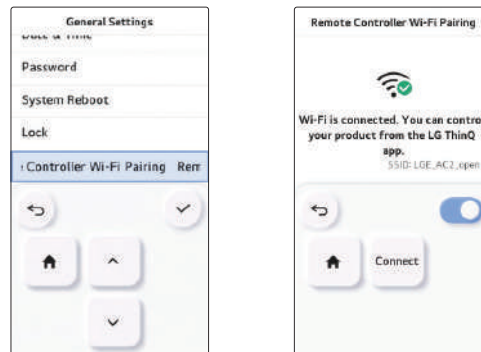
Lock	Description
All lock	It locks all button operation of the remote controller.
On/Off lock	It locks the On/Off button operation of the remote controller.
Mode lock	It locks the operation mode button operation of the remote controller.
Temperature range lock	It is the function that can limit the range of the desired temperature that can be set in the wired remote controller. - Single: Lower limit : 16~30 °C (60~86 °F) Upper limit : 16/18~30 °C (60/64~86 °F) - Dual : Cooling : 10~37.5 °C (50~99 °F) Heating : 4~32 °C (40~90 °F)

NOTE

After setting the lock, when controlling the function, a popup about the function lock appears on the Home screen, allowing you to check the lock status.

Remote Controller Wi-Fi Pairing

A function to connect the remote controller to the LG ThinQ app, the pairing function of the Wi-Fi module built in the remote controller is activated.

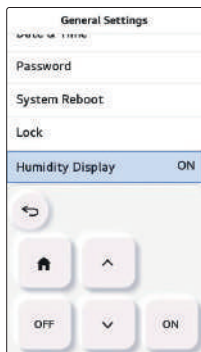


NOTE

The Remote Controller Wi-Fi Pairing function is available only on select models. It is recommended not to use the 'Wi-Fi pairing' function in the Air Conditioner/Ventilation Settings simultaneously with this function.

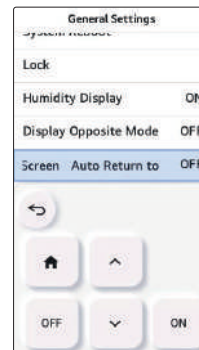
Humidity display

It is the function to decide whether to display humidity on the main screen and additional information screen.



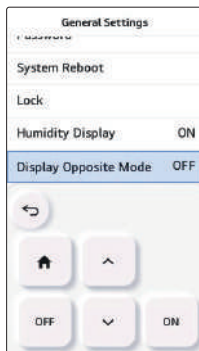
Auto Return to Main Screen

A function to set whether to auto return to the main screen when there is no touch input for a certain period.



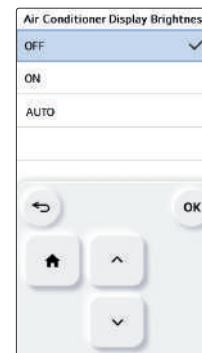
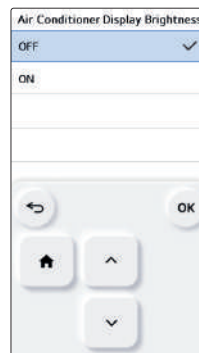
Display Opposite Mode

A function to set whether to display Mode selection as unavailable in accordance with the outdoor unit operation when the cooling/heating mode is selected in a product which does not support cooling/heating operation at the same time.



Air Conditioner display light brightness setting

This function adjusts the brightness of the indoor unit display light.

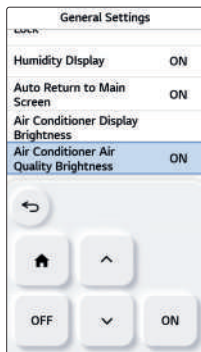


Classification	Value
General model	ON, OFF, AUTO
Model adjustable in brightness	100%, 50%, OFF, AUTO

- * "Auto" setting is only available in the indoor units that is equipped with the human detection sensor.
- * When set to Auto, the indoor unit display light brightness will automatically adjust according to the illuminance detected by the human detection sensor.
- * "Off" setting is only available in the indoor units that have brightness control function.

Air Conditioner Air Quality brightness setting

A function to control the indoor unit's air cleanliness display brightness.



Value	
ON	OFF

Air Conditioner Settings

Elevation Grill Setting

It is the function to operate the Elevation grill for the indoor unit filter cleaning.



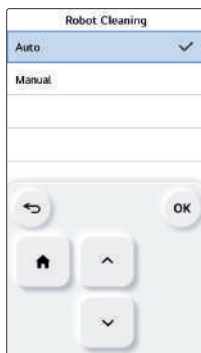
! NOTE

The Elevation grill setting function may not work in some products.

Robot Cleaning Setting

Robot cleaning function is the function to perform the automatic filter cleaning with the cleaner of the product when the conditioner is used for certain period of time. It sets the manual or automatic operation of the robot cleaning.

- It can be set 30 seconds after the operation stop.



Value	Description
Automatic	It automatically performs the robot cleaning when the accumulated indoor unit operation time passes 30 hours
Manual	It manually performs the robot cleaning.

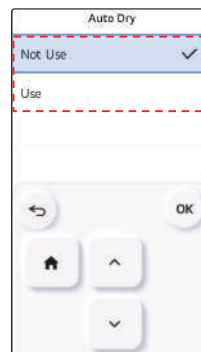
NOTE

The robot cleaning setting function may not work in some products.

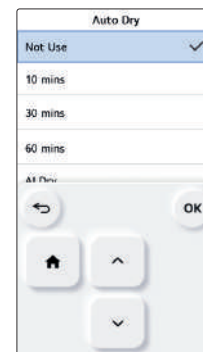
Auto Dry Setting

Auto dry function is the function to remove mold and moisture by drying the coil after the cooling operation and when the product is turned off.

- Select the time you want with the \vee and \wedge buttons and then press the OK button to finish setting.



<General models>



<Models where the Auto Dry time can be selected>

- General models

Value	Description
Use	Use auto dry function
Not Use	Not use auto dry function

- Models where the Auto Dry time can be selected

Value	Description
Not use	Not use auto dry function
10 mins	Maintains Auto Dry operation for 10 minutes
30 mins	Maintains Auto Dry operation for 30 minutes
60 mins	Maintains Auto Dry operation for 60 minutes
AI Dry	Automatically sets drying time by judging the indoor humidity or drying operation conditions. ※ In some models, the drying fan speed can be changed on the fan speed control screen during the AI drying operation, and the drying time can be reduced by setting a high fan speed. However, to finish drying, changes in fan speed are not reflected in the indoor unit product five minutes before the operation ends.

NOTE

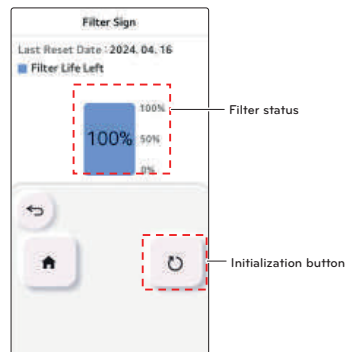
The Auto Dry setting function may not be available on some products.

- On some models with LEDs, the operating LED flashes periodically while auto drying. (Not a malfunction)
- When the product is shipped, the Auto Dry function is locked. Please set the Auto Dry function if necessary.
- For some products, the Auto Dry function may not work if cooling is ended within five minutes after starting operation.

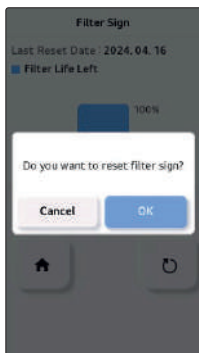
Filter Sign Check and Initialization

When it becomes the time for the indoor unit filter cleaning, the filter cleaning message appears, and it is the function to remove the message.

- In the function setting list, select the Filter sign check and initialization category, and press [OK] button to display the detail screen.



Press the reset button to show the confirmation popup. Press the OK button to finish resetting the filter status.



Filter sign	Description
Good	Usage time is 70% or less
Normal	Usage time is 71~80%
Caution	Usage time is 81~99%
Bad	Usage time is 100%

- When it is time to clean the filter "Filter cleaning or replacement is required." message is displayed. Enter the Filter sign check and initialization detail screen.
- If the product has the function to display the time remaining until the filter cleaning, even if the filter cleaning message is not displayed, you can enter the Filter sign check and initialization.
- If there is a remaining time display function, when you enter the Filter sign detail screen, you can see the consumption and the remaining time.

NOTE

- Some products have a Filter Time Remaining function that can be accessed with Filter Sign check.
- Dirty filters will increase the cost to cool or heat the conditioned space.
- The filter check message is cleared after certain time without a separate clearing.

Change Temperature Setting

Change Temperature(Single Setpoint Deadband) is the function to set the automatic Change Temperature between cooling and heating operation according to the temperature in AI operation mode.

- Select the temperature you want with the \vee and \wedge buttons and then press the OK button to finish setting.



Value

1~7 °C (Default : 2 °C)

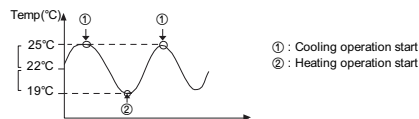
It is the function that can be used only in cooling/heating product.

Example of using Change Temperature

Condition

- 1) Mode: AI mode
- 2) temperature: 22 °C
- 3) Change Temperature: 3 °C → Change Temperature 3 °C difference

※ In case of the above conditions, it operates as in the graph.



NOTE

The Change Temperature setting function may not work in some products.

Dead Band

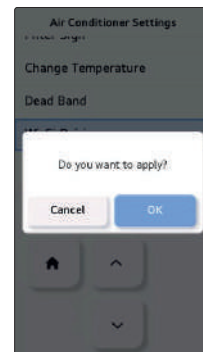
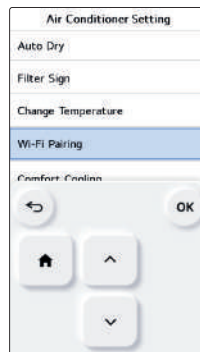
This function sets the minimum difference between heating and cooling desired temperature in 2set Auto mode.



Value
0~5 °C (0~10 °F)

Wi-Fi Pairing Setting

It is the function to perform the pairing function of the Wi-Fi module connected to the indoor unit.



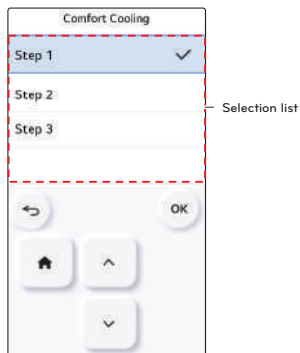
! NOTE

The Wi-Fi setting function may not work in some products.

Comfort Cooling Setting

It is the function to set the outdoor unit Comfort saving operation value.

- Select the step you want with the ∇ and \wedge buttons and then press the OK button to finish setting.



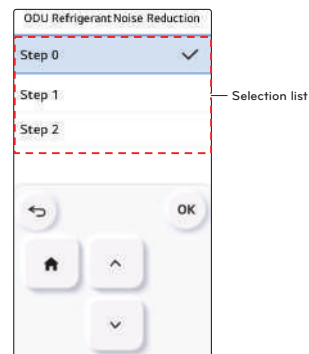
! NOTE

The Comfort cooling function does not work in the group control.
Comfort cooling setting function is only available in some products.

ODU Refrigerant Noise Reduction Setting

It is the function to set the outdoor unit's refrigerant noise reduction function.

- Select the list you want with the ∇ and \wedge buttons and then press the OK button to finish setting.



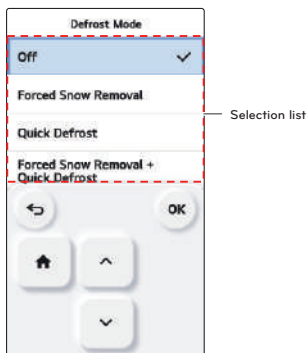
! NOTE

The ODU Refrigerant Noise Reduction function can be set only when the installer setting's outdoor unit function M/S setting is set to "Master".
ODU Refrigerant Noise Reduction function is only available in some products.

Defrost Mode Setting

Change the outdoor unit's defrost mode operation.

- Select the list you want with the ∇ and \wedge buttons and then press the OK button to finish setting.



! NOTE

The Defrost mode setting function can be set only when the installer setting's outdoor unit function M/S setting is set to "Master".

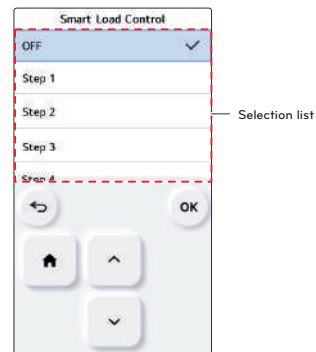
Defrost mode setting function is only available in some products.

Smart Load Control (SLC) Setting

Change the outdoor unit's Smart Load Control stage value.

(Smart load control is the function to calculate the indoor air temperature, outdoor air temperature, and humidity to operate effectively.)

- Select the step you want with the ∇ and \wedge buttons and then press the OK button to finish setting.



! NOTE

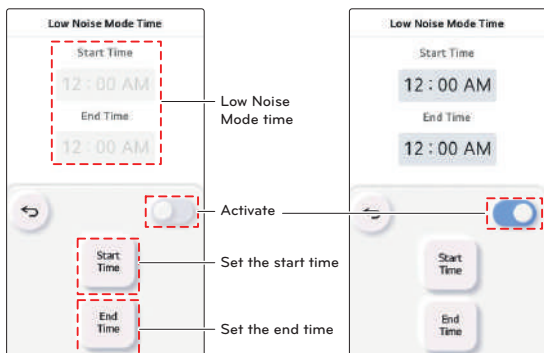
Smart load control function can be set only when the installer setting's outdoor unit function M/S setting is set to "Master".

Smart load control function is only available in some products.

Step4 settings may not be available on some indoor unit products.

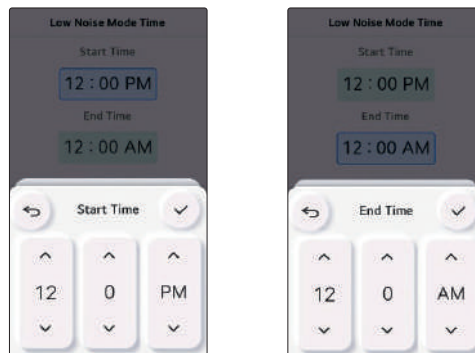
Low Noise Mode Time Setting

It is the function to set the start and end time of the outdoor unit's low noise mode operation.



Button	Description
	Low Noise Mode Time activation button - Activate/Deactivate
	Set the start time - Move to the screen to set the start time.
	Set the end time - Move to the screen to set the end time.

- After setting the start time and end time, press the [OK] button to save it and move to the upper list.
- If the start time and the current time are the same, the outdoor unit Low Noise Mode starts and a message indicating that the outdoor unit in Low Noise Mode is displayed on the Monitoring screen.
- If the end time and current time are the same, the outdoor unit Low Noise Mode is canceled.



NOTE

Low noise mode time setting function can be set only when the installer setting's outdoor unit function M/S setting is set to "Master".
Low noise mode time setting function is only available in some products.

CAUTION

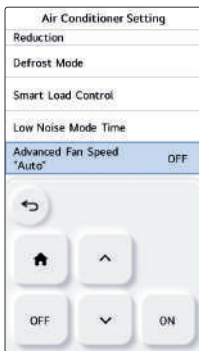
If the function is not used, please set it to Off.
When you enter the low noise operation, the cooling capacity may be degraded.

Advanced Fan Speed Auto

It is the function to set the indoor unit's temperature based auto fan usage.

It is the function to automatically change the fan speed according to the difference between the indoor temperature and the desired temperature.

- Use the ∇ and \wedge buttons to select the setting, set it with the ON/OFF buttons.

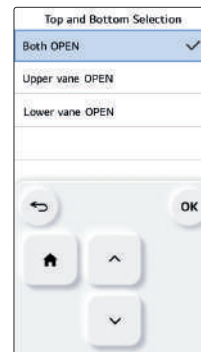


! NOTE

Advanced fan speed "Auto" setting function is only available in some products.

Top and Bottom Selection

This is a function to set the usage of the upper and lower vanes when operating the product.

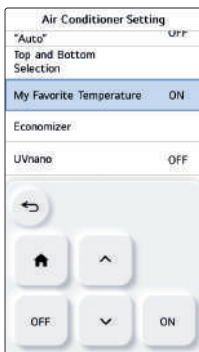


! NOTE

Discharge direction setting function may not be available on some products.

My Favorite Temperature

A function to set the desired temperature in initial operating mode when the user saves a set desired temperature.



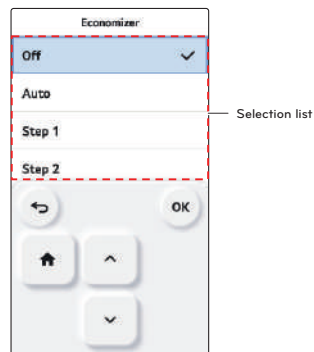
NOTE

The temperature customization function may not work on some products.

Economizer Setting

Provides outside air to a room to save energy and improve the air quality indoors.

- Select the step you want with the \vee and \wedge buttons and then press the OK button to finish setting.



Value	Description
Off	Disable the economizer function to keep the outside air damper closed.
Auto	If the outside air temperature is lower than the air temperature indoors when cooling is being operated, outside air is supplied to the room to save energy.
Step 1	Opens the outside air damper opening by one stage to improve the indoor air quality by introducing fresh air into the room.
Step 2	Opens the outside air damper opening by two stages to improve the indoor air quality by introducing fresh air into the room.

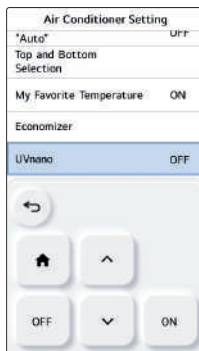
NOTE

Economizer setting function may not be available on some products.

UVnano

The UVnano function uses UV LEDs to sterilize fans or filters at regular intervals.

- Select the list you want with the ∇ and \blacktriangle buttons and then press the OK button to finish setting.

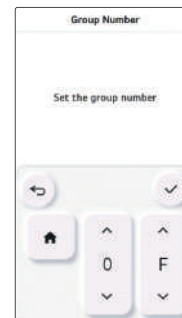
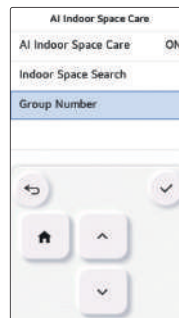
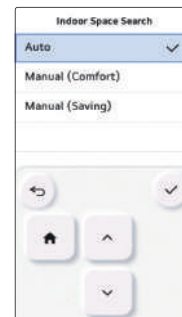
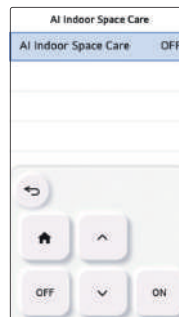


NOTE

- The configuration of the screen displayed may vary depending on the version of the remote control.
- UVnano is a compound word of "UV" and "nanometer".
- The UVnano function may not work on some products.
- If repair is required while using the UVnano function, the UV icon is displayed at the bottom of the Home screen. If the UV alarm is displayed, contact LG Electronics Service Center for repair.

AI Indoor Space Care

A function where nearby indoor units cooperate to create a pleasant space when the target temperature cannot be reached due to ambient thermal load, even though 100% of the indoor unit's cooling / heating capacity is being used.



Use (Y / N)	Indoor Space Search	Group Number
Off	-	-
On	Auto	-
	Manual (Comfort)	00~FF
	Manual (Saving)	

- Auto: Automatic space learning
- Manual (Comfort): Set manual group / Set comfort first
- Manual (Saving): Set manual group / Set power saving first

! NOTE

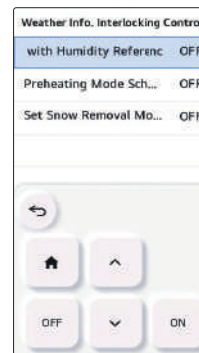
- The AI Indoor Space Care finds surrounding indoor units that can co-operate through AI field learning. It needs at least two weeks for the learning period, and additional learning periods may be required depending on the operation method and environment at the installation site.
- You can operate up to 2 cooperative indoor units.
- After setting to use the AI Indoor Space Care, it is available when operating the AI Smart Care.
- The AI Indoor Space Care indoor units may be automatically turned on and off as a result of AI field learning.
- If you do not wish to use the AI Indoor Space Care function, set it to Not use. For models that support the Set Indoor Space Care manual group function, set to Off.
- If a model for both cooling/heating, the AI Indoor Space Care is not available during simultaneous cooling and heating operation.

Weather Info. Interlocking Control

The Weather Info. Interlocking Control is a function that operates by referring to outdoor operation information.

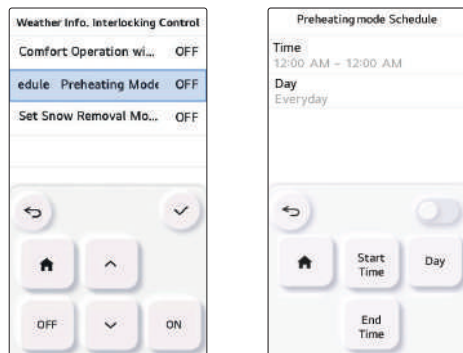
In the lower settings list, you can set the settings for comfort "Comfort operation with humidity reference", "Preheating mode Schedule", and "Set Snow Removal Mode".

- The Comfort Operation With Humidity Reference is a function that uses the outdoor humidity to actively save power for when the outdoor unit is running.



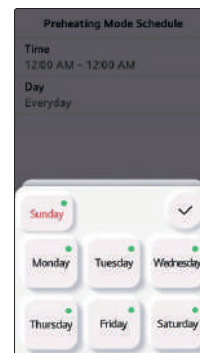
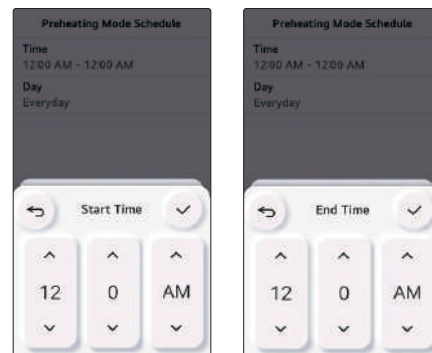
Value	Description
OFF	Don't use Comfort Operation With Humidity Reference
ON	Use Comfort Operation With Humidity Reference

- The Preheating Mode Schedule is a scheduling function that shortens the time to reach a comfortable temperature by warming up the indoor space before actual use.



Value	Description
OFF	Disable Preheating Mode Schedule
ON	Enable Preheating Mode Schedule

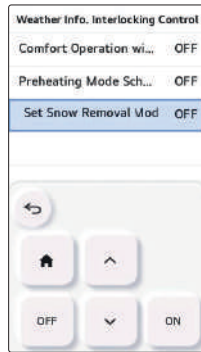
- Press the "OK" button to go to the screen where you can set the Preheating Mode Schedule. Set "Start Time", "End Time", and "Day" and press the "OK" button to complete the settings.



! NOTE

When the Preheating Mode Schedule is running, it is displayed in the monitoring information.

- The Set Snow Removal Mode setting is a function to set whether to operate the outdoor fan when it snows to remove the snow.

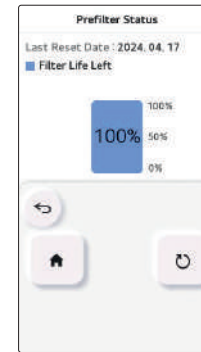


Value	Description
OFF	Don't use Set Snow Removal Mode
ON	Use Set Snow Removal Mode

Prefilter Status

You can check the Prefilter Status and initialize the filter usage time.

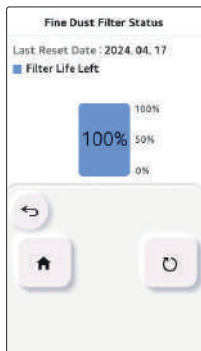
- Select a Prefilter Status item from the function setting list and then press the [OK] button to move to a detailed screen.



Fine Dust Filter Status

You can check the Fine Dust Filter Status and initialize the filter usage time.

- Select a Fine Dust Filter Status item from the function setting list and then press the [OK] button to move to a detailed screen.



- When it's time to clean the filter, the "The filter needs cleaning or replacement" message is displayed in the pop-up window and in the monitoring information.

NOTE

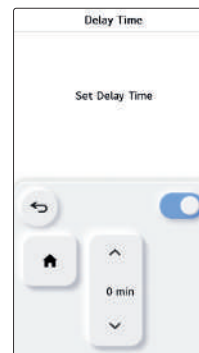
- The used and remaining amount are for reference, and the actual filter status may vary depending on the installation environment and usage conditions.
- When dust is caught in the filter, the airflow decreases and the electric bill is high, so be sure to clean or replace the filter when it is time to clean or replace it.
- The fine dust filter check mark will not be cleared unless you specifically clear it.

Ventilation Settings

Delay Time

It is the function to set the ventilation operation to start after the delay time.

- In the function setting list, select the delay time category, and press [OK] button to move to the detail screen.

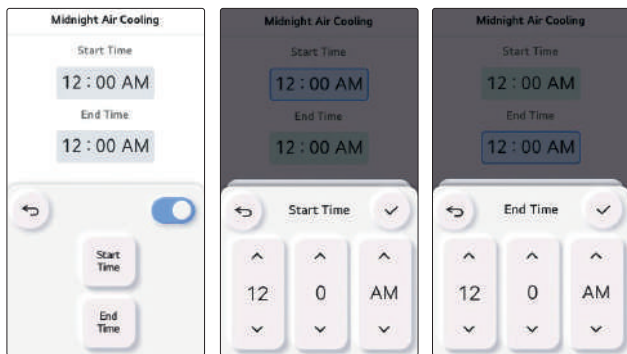


Value
0 ~60 Minutes

Midnight air cooling

It is the function to discharge indoor air and supply cool outdoor air into the indoor during summer nights to save energy.

- In the function setting list, if you select midnight outdoor air cooling category and press [OK] button, it moves to the detail screen.
 - When you set the start and end time and press [OK] button, it saves and moves to the upper level list.



NOTE

Whether to run the midnight air cooling is decided only when both air conditioner and ventilation are stopped.

- Even if it is the set midnight air cooling time, it enters the midnight air cooling only when the outdoor temperature conditions is met.
- During the midnight air cooling operation, "in midnight outdoor air cooling" message is displayed on the monitoring screen.
- Midnight air cooling function may not work in some products.

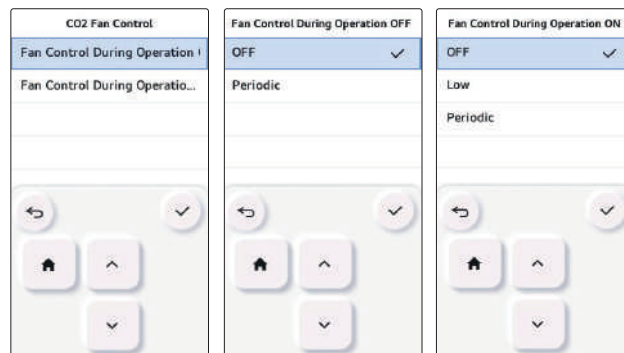
CAUTION

If you do not use the function, please set it as off.

CO2 Fan Control

A function that controls the fan when the product is turned ON/OFF, based on the CO2 concentration in the ventilation product.

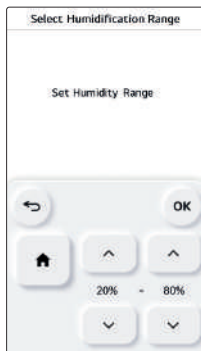
- After selecting "CO2 fan control" in the Function settings list, press the [OK] button to go to the detail screen.
- After selecting "Fan control during operation on" or "Fan control during operation off" in the "CO2 Fan Control" list, you can set the following values using button.



Condition 1	Condition 2
Operation ON	OFF
	Low
	Periodic
Operation OFF	OFF
	Periodic

Select Humidification Range

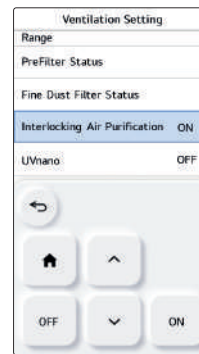
It is the function to set the desired humidification range of DX-Type Ventilation products. It can be set in increments of 5%.



Classification	Value
Min.	20% ~ 70%
Max.	50% ~ 80%

Interlock air purification with AC and ventilation

AC-ventilation air purification interlock is a function that aids with indoor air purification by operating ventilation with the air purification operation of the AC when the indoor fine dust concentration is bad.



NOTE

- If the AC's fine dust concentration is bad or very bad, ventilation is interlocked.
- Ventilation is operated at Special High Speed during interlocking operation.
- The interlocking function may not work in some products.

Service

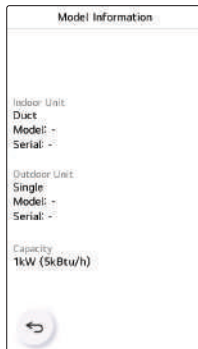
Service Contact

You can check and input the service center phone number that you can call when there is service issue.



Model Information

You can check the indoor and outdoor unit types and product capacity information.



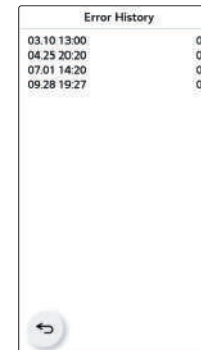
RMC Version Information

You can check the master/slave status of the installed product and its SW version.



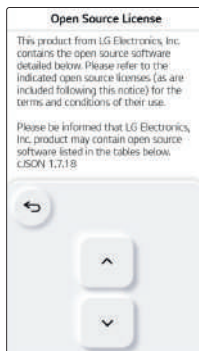
Error History

You can view the connected indoor unit's error history.



Open Source License

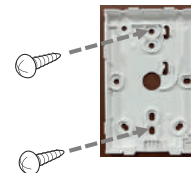
You can view the remote controller's open source license.



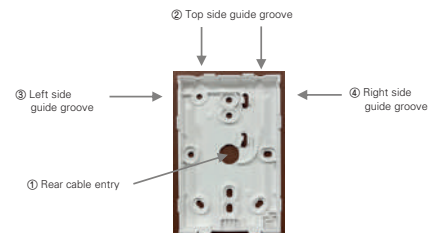
INSTALLATION

Installation of Remote Controller

- After fixing the remote controller installation plate on the desired location, fix it firmly with the provided screws.
 - If the installation plate is not flat on the surface, it may result in the controller being twisted and cause a defect.
 - If there is a mounting box, install the remote controller installation plate using the fixings holes which suit, as in the below diagrams.
 - Do not leave a gap with the wall or product loose after the installation.



- The wired remote controller cable can be installed in 4 directions. Install to the suitable direction according to the installation environment.
 - Installation direction: Rear entry, top side, right side, left side.
 - When you install the remote controller cable at the top, right and left side, remove the remote controller cable guide hole before the installation.
 - ※ Use a long nose pliers to remove the guide hole.
- After removing the hole, trim the cut surface neatly.



- When installing the remote control cable on the left side, be sure to install it in the following guide.
 - Make the cable to "ㄱ" shape as shown below.
 - Fit the bent "ㄱ" cable into the upper center piece of case.
 - Tighten the installation plate with preventing interference with the surrounding guide structure.



Reference. the bent cable shape



The Upper center boss for fixing the bent cable

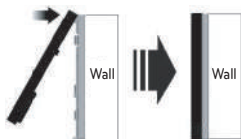
NOTE

If the cable is assembled in a shape other than "ㄱ", it may not be fastened to the installation plate due to interference with the structure of case.

- After fixing the remote controller top side on the installation plate attached to the wall as in the following figure, press the bottom side to combine with the installation plate.

- Do not leave a gap in the top, bottom, left, and right side of the remote controller and the installation plate after combining them.
- Before combining with the installation plate, arrange the cables to avoid interference with the circuit parts.

<Order of Combining>



- When you remove the remote controller from the installation plate, insert a small flat head screwdriver into the bottom side separation hole and turn clockwise to separate the remote controller.

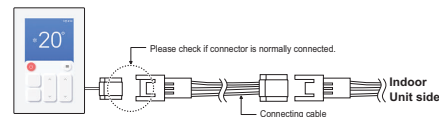
- Be careful not to damage the internal parts during the removal.

<Order of Separation>



- Use the connection cables to connect the indoor unit with the remote controller.

DC 12 V	Red
Signal	Yellow
GND	Black



- For the following cases, separately purchase and use the cables suitable for the situation.
 - Do not install the cable over 50 m. (It may cause communication issues.)
 - If the distance between the wired remote controller and the indoor unit is 10 m or more : 10 m extension cable (model name: PZCWRC1)
 - If you control several indoor unit products with one wired remote controller : Group control cable (model name: PZCWRCG3)

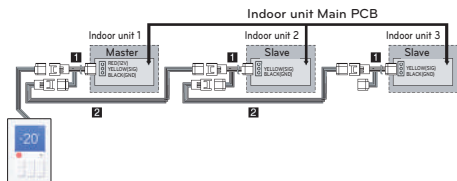
NOTE

- Install the wired remote controller indoors away from direct sunlight.
- When installing using a remote control connection cable embedded in the wall, please check whether airflow is generated from the cable hole in the wall before installation. If there is airflow, block the cable hole to prevent the airflow inside the remote control from being affected. If the remote control is affected by airflow, it may not detect the space temperature accurately.
- Install the wired remote controller in a place that is NOT directly affected by outside air, away from doors or windows. (The current temperature may not be accurately displayed if it is affected by the temperature outside as doors and windows are opened and closed.)
- During the wired remote controller installation, do not bury it in the wall. (It may cause temperature sensor failure.)
- Do not install the cable over 50 m. (It may cause communication defect.)
- When you install the extension cable, carefully check the direction of the connectors on the remote controller side and the product side before the installation.
- Specification of extension cable: AWG 24, 3 conductor or above.

Group control

- It connects and controls 2 or more air conditioner indoor units (Maximum number of IDU : 16 ea) to one wired remote controller.

※ Connect using the group control cable.



- Group control cable (PZCWRCG3): Connect to indoor unit's wired remote controller connector
- Extension cable (PZCWRC1): Connect to No. ① cable and slave indoor unit's wired remote controller connector

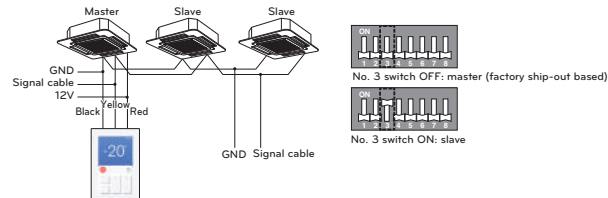
While No. ① cable is connected, connect No. ② cable.



NOTE

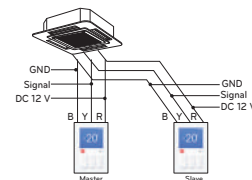
- Connect only GND and signal cable to the indoor unit set as slave. (If power cable is also connected, it may cause loss of communication)
- Inquiries related to the purchase of the cable shall be directed to the specialized company and the service center.

- Change master/slave of the indoor unit.
 - For ceiling cassette and duct product group, change the setting with the indoor unit PCB switch.



- After completing the master/slave setting in the indoor unit product, turn Off the power of the indoor unit product, and turn On the power after 1 minute.

- You can use two wired remote controllers for one indoor unit.
 - A dedicated cable must be used for the connection. If necessary, use an extension cable additionally and install. (2-Remo cable : PZCWRC2, Extension cable : PZCWRC1)
 - For normal operation, one should be set as master and the other as slave. (Refer to the function "Installation setting - RMC master/slave")
 - After completing the RMC master/slave setting, turn off the power of indoor unit, and turn on the power after 1 minutes.
 - You cannot control the group as shown in the right for some products.

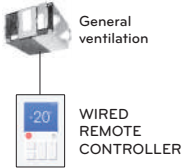
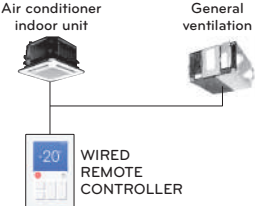
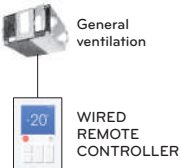
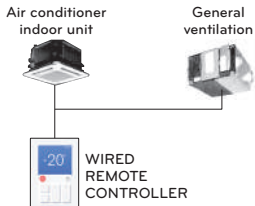


NOTE

- During the group control, set only 1 indoor unit as master.
- During the group control, some functions other than the basic operation setting, fan speed Low/Med/High, remote controller lock setting, and time setting may be limited.
- During the individual control, if the master indoor unit DIP switch is set to slave, malfunction may occur.

Air conditional and ventilation interface

- It controls using the wired remote controller at a place where the air conditioner indoor unit and the ventilation product are connected and installed at the same time.
 - When the power is applied, the remote controller recognizes the product and operates normally.

	Independent operation	Interfaced operation
General ventilation	[General ventilation independent operation] 	[General ventilation interfaced operation] 
Direct ventilation	[Direct ventilation independent operation] 	[Direct ventilation interfaced operation] 

※ The wiring method is the same as the air conditioner user manual. (Refer to the remote controller manual group control page contents)

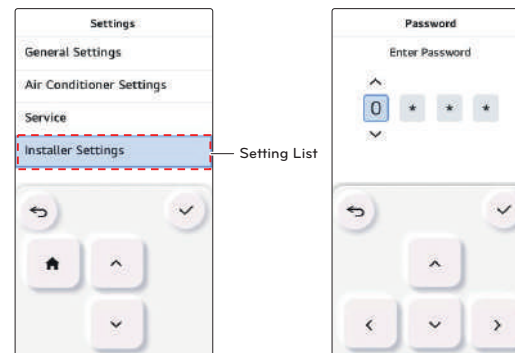
※ Ventilation product means general ventilation product and direct cooling type ventilation product.

Installer Setting

! CAUTION

The installer setting mode is the mode to set the remote controller's detail function. If the installer setting mode is incorrectly set, it may cause product failure, user's injury, or property damage. It must be set by the installation specialist with the installation license, and if it is installed or changed without installation license, all problems caused will be the responsibility of the installer, and may void the LG warranty.

- Select the list you want with the \vee and \wedge buttons and then press the OK button to move to the screen for the selected list.



※ Installer setting password

Home → Menu → Settings → Service → RMC Version Information

Example SW version : 1.00.1 a

In the above case, the password is 1001.

! NOTE

Some categories of the installer setting menu may not be available depending on the product function or the menu name may be different.

Air Conditioner / Ventilator Installer Settings

- You can set the product user functions.
- Some functions may not be displayed/operated in some product types.

Menu	Description
Test run setting	It is the function to set the trial operation at the initial product installation.
Central control address Setting	It is the function to set the central control address of the indoor unit during the central controller connection.
ESP setting	It is the function to set the fan speed value corresponding to each fan speed for easy installation
Temperature sensor setting	It is the function to select the temperature sensor that will decide the indoor temperature.
Ceiling Height Setting	It is the function to control the fan speed stage according to the ceiling height in the ceiling type product.
Static pressure setting	The fixed pressure setting can be set only in the duct products. It cannot be set in other products.
Remote Controller Master/Slave Setting	It is the function to set group control or 2-remote controller control.
Override master/slave setting	The operation master / slave selection function is to avoid other mode operations, and it is the function to prevent the selection of the opposite mode of the indoor unit set as master by the indoor units set as slaves.
Dry contact mode setting	Dry contact function is the function that can be used only when the dry contact devices is separately purchased and installed.
3 Minutes delay	It is the function that temporarily cancel the 3 min. delay function of the outdoor compressor.
SEER Mode	It is the function to measure the driving ability of the duct product.
Fixed air volume	It is the function to apply different fan speeds automatically for each thermal control status.
Over Heating	Provides an adjustable deadband around the heating setpoint through selectable heating thermal on/off values.
Pipe Temperature	It is the function to check the temperature of the pipe connected to the product.
Emergency Heater setting	It is the function to set whether to use emergency heater control function and the usage environment.

Menu	Description
Func. control during grp. Control setting	It is the function to set common functions or some functions to be controlled by the master indoor unit standard during the group control.
External Device of Indoor Unit Setting	It is the function to set whether to mount option unit (Air purify / Humidification / Heater / Ventilation / Elevation grill / Aux Heater / Refrigerant leakage detection sensor) when it is additionally installed or removed after the mass production.
Indoor unit address verification	This function allows you to check the address of the indoor unit designated by the outdoor unit.
Over Cooling	Provides an adjustable deadband around the cooling setpoint through selectable cooling thermal on/off values
Guard Timer	This function sets the outdoor unit cycle conversion operation standby time, and sets the outdoor unit protection time for cycle conversion.
Static pressure step setting	This is the function that static pressure of the product is divided in 11 steps for setting.
Fan speed in Cooling thermal off	It is a function that sets the indoor unit fan movement, in cooling mode, when thermal is off.
Primary heater setting	It is the function to set the heater usage to have higher priority over the outdoor unit cycle during the indoor unit heating operation.
Air conditioner Fan operation interlocked with ventilation setting	It is the function to set the air conditioner fan operation if the ventilation is operated while the air conditioner operation is stopped when the air conditioner and the ventilation are installed to interface with each other.
Indoor unit Auto-Start setting	It is a function that sets whether to restore the indoor unit operation by resuming the previous power-on state or as power-off state in the power failure compensation.
Occupancy duration time setting	This function sets the absence determination maintenance time among the in-room sensor values.
CN_CC setting	It is the function to set whether to install (use) Dry Contact. (It is not a function for Dry Contact installation, but it is a function to set the usage of the indoor unit's CN_CC port.)
CN_EXT setting	It is the function to set the indoor unit's Dry Contact Port to control external input and output according to DI/DO set by the customer. (It is the function to decide the usage of the contact point port (CN_EXT) mounted in the indoor unit PCB.)
Fan continuous operation setting	It is the function to set the indoor unit's continued Fan function usage. It is the function to maximize the cooling/heating efficiency by the outdoor unit operating the indoor unit fan operation longer than the previous operation method.
Lamp Color Setting	It is the function to select the LED color to display the fine dust status of the product.

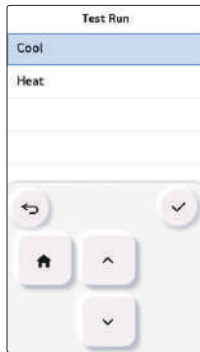
Menu	Description
Dust Lamp Always Displayed	It is the function to set whether to regularly display the dust concentration on the LED lamp mounted on the indoor unit.
Dust Step Color Setting	It is the function to change the color display method for each stage of fine dust according to national standards.
Humidity sensing position	It is the function to set the location to detect humidity.
Outdoor temp. for heating stages	This function can select outdoor temperature values for use reference point of heater and heating mode operation.
Estimated Energy Display	This function can set to display energy data which outdoor unit estimated power consumption data without wattmeter.
CN_PTC setting	This is a function to set PTC Port of indoor unit.
Temperature Compensation	You can display on the screen by applying the compensation value to the temperature value detected by the remote controller.
Humidity Compensation	Compensation value can be applied to the humidity value detected by the remote controller to display on the screen.
FAN Operation Time	It is the function to display the operation cumulative time of the indoor unit fan motor.
Indoor Temperature Master / Slave	It is the function to set the Master / Slave for the temperature sensors for each indoor unit.
Internal Heater During Defrost (Heater On in Defrost)	This function keeps the internal heater in use during defrosting.
IDU Operation Time	A feature that displays the cumulative time that the indoor unit has been on.
Indoor Unit Physical Address	It is the function to set the physical address of the indoor unit.
Heating By Sensing Floor Temperature	It is the function to set whether to use the floor temperature detection sensor.
Password initialization	It is the function to initialize (0000) the password when you forgot the password set in the remote controller.
Auto ESP	This function automatically sets the rotation speed of the fans corresponding to each step of rated airflow for easy installation.
UVnano / Filter Box	It is the function to set whether to mount option unit (UVNano/Filter box) when it is additionally installed or removed after the mass production
Fan Operation During Auxiliary Heater Only	This is a function to set the indoor unit fan to be used even when the Auxiliary heater is operating alone.
ODU Function Master	It is the function to set the outdoor unit's function Master / Slave.

Menu	Description
Low Noise Mode Priority setting	It is the function to set the main agent of the low noise mode control. (It is the function to set only one of the outdoor unit / remote controller can control the low noise operation.)
ODU Cycle priority	This function can select standby mode or priority cooling.
Noise Target Control	The Noise Target Control function is a function that limits the noise caused by the outdoor unit running.
Noise Adaptive Control	The Noise Adaptive Control function controls the noise generated by the outdoor unit by limiting the operation of the outdoor unit COMP and FAN according to the surrounding noise.
Piping Address Setting	This function sets the piping address of the "Multi" series.
Refrigerant Leak Sensor Timer	This function resets the life timer of the refrigerant leakage detection sensor.
Product Direction	It is the function to set the direction of the ventilation product
Express Ventilation Priority	It is the function to set the priority of the air supply and air discharge during the express ventilation operation.
Humidification of Stand-alone Ventilation Mode	It is the function to set whether to use the humidification function during the ventilation product single operation.
Humidification of Ventilation with Heating Operation	It is the function to set the heating humidification function of the direct ventilation to be automatic or manual.
Ventilation Fan Speed Alignment	It is the function to change the standard fan speed of the ventilation product.
Filter Check Alarm	This function sets the filter check alarm of the ventilation product.

Test Run Setting

After product installation, the Test run must be performed. For Test run related details, refer to the product manual.

- In the installer setting list, select the Test run setting category, and press [OK] button to move to the detail screen.
 - You can select 'cooling Test run / heating Test run'
 - During the Test run, if you start the following functions, the Test run stops.
- * Operation mode, desired temperature, fan speed, wind direction, start/stop



Central Control Address Setting

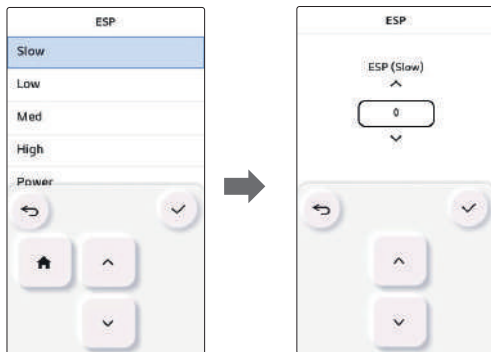
It is the function to set the central control address of the indoor unit to allow communication with a central controller.

- In the installer setting list, select the central control address setting category, and press [OK] button to move to the detail screen.
 - Select a hex value between 00 and FF.
 - Value 1: group address setting / value 2: indoor unit address setting



ESP Setting

It is the function to set the fan speed value corresponding to each fan speed for easy installation.



NOTE

If ESP is incorrectly set, the air conditioner may malfunction.
This function must be set by the installation specialist that holds an installation license.
For ventilation products, separate ESP values are used for the supply and exhaust fans.

- In the installer setting list, select the ESP setting category, and press [OK] button to move to the detail screen.

Product	ESP fan speed	value
Air conditioner	Slow	0 ~ 255
	Low	
	Med	
	High	
	Power	
Ventilation	Low	
	High	
	Power	

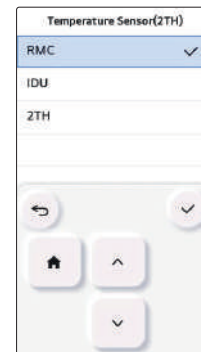
NOTE

Be especially careful not to switch ESP values corresponding to each fan speed.
Engineering manuals have ESP setting tables that reference air flow and corresponding value setting to achieve the flow.
The ESP values that can be set may be different for each product and capacity.

Temperature Sensor (2TH) Setting

It is the function to select the temperature sensor to decide the indoor temperature.

- You can set the following setting values using [\wedge / \vee] button.

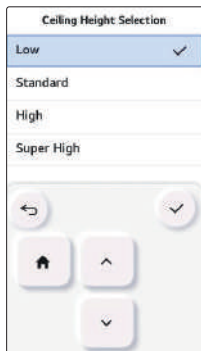


Temperature sensor location	Description	
Remote Controller (RMC)	Operate the system with wired remote controller's temperature sensor	
Indoor Unit (IDU)		Operate the system with indoor unit's temperature sensor
2TH	Cool	Compare the temperatures of the indoor unit and the wired remote controller and operate with the higher temperature (There are system operated with lower temperature)
	Heat	Compare the temperatures of the indoor unit and the wired remote controller and operate with the lower temperature

- 2TH function's operation characteristics may be different for each product.

Ceiling Height Setting

It is the function to control the fan speed stage according to the ceiling height in the ceiling type product.



Ceiling height	Description
Low	Fan speed operates one step slower than the default value.
Standard	Operates at the default fan speed
High	Fan speed operates one step faster than the default value.
Super High	Fan speed operates two steps faster than the default value.

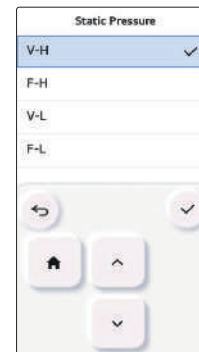
NOTE

When group control is enabled some functions are limited depending on product type.

Static Pressure Setting

Static pressure setting can be set only in the duct products. (It cannot be set in other products.)

- You can set the following setting values using [^ / v] button.

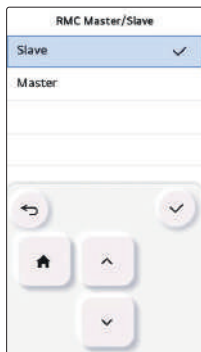


Static pressure		Description	
		Variable / Fixed	ESP default value
Variable high static pressure	V-H	Variable	High static pressure(High)
Fixed high static pressure	F-H	Fixed	High static pressure(High)
Variable low static pressure	V-L	Variable	Low static pressure(Low)
Fixed low static pressure	F-L	Fixed	Low static pressure(Low)

Remote Controller Master/Slave Setting

This function sets configuration for the master/slave setting through the remote controller.

- Change setting values using [Λ / ∇] button.



M/S	Description
Master (default)	Using group control, the indoor units are operated based on the remote controller.
Slave	Using group control, all remote controllers except 1 master remote controller are set as slaves.

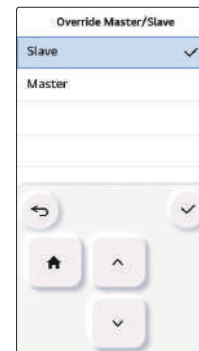
NOTE

- It is set as the master at the time of shipment.
- When one remote control is used, it must be set and used as the master.
- When two remote controls are used, set one remote control as the master and the other remote control as the slave.

Override Master/Slave Setting

The operation master / slave selection function is to avoid other mode operations, and it is the function to prevent the selection of opposite mode of the indoor unit master by the indoor units set as slaves.

- Change setting values using [Λ / ∇] button.



M/S	Description
Master	Using group control, this master sets the mode of slave IDU's.
Slave	For the indoor unit set as slave, it can only select some operation mode of the master indoor unit cycle. Ex) Master is in cooling cycle, Slave can select cooling, dehumidification, auto, and wind only Master is in heating cycle, Slave can select auto, heating, and wind only

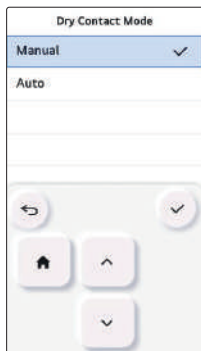
NOTE

Override M/S setting function is only available in some products.

Dry Contact Mode Setting

Dry contact function is the function that can be used only when the dry contact devices is separately purchased and installed.

- Change setting values using [Λ / V] button.



Value
Auto
manual

NOTE

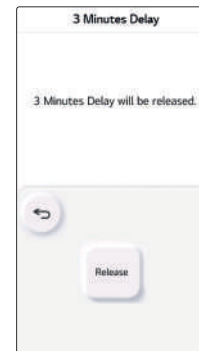
For dry contact mode related detail functions, refer to the individual dry contact manual.
What is dry contact?

It means the contact point signal input when the hotel card key, human body detection sensor, etc. are interfacing with the air conditioner.

Added system functionality by using external inputs (dry contacts and Voltage contacts).

3 Minutes delay

It is the function that temporarily cancel the 3 min. delay function of the outdoor compressor.

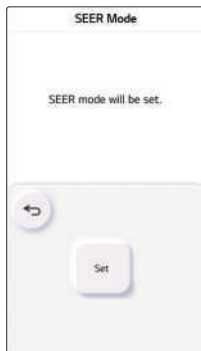


CAUTION

Do not randomly set it since it is a function used for producing the products.

SEER Mode

It is the function to measure the driving ability of the duct product.



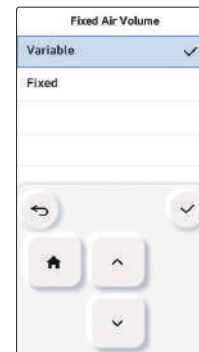
! CAUTION

Do not randomly set it since it is a function used for producing the products.

Fixed Air Volume

It is the function to apply different fan speeds automatically for each thermal control status.

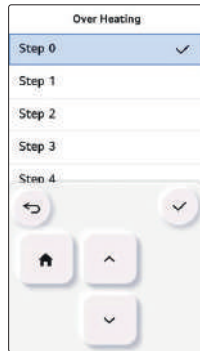
- You can set the following setting values using [^ / v] button.



Value	Comp on	Comp off
Variable	Set fan speed	Low
Fixed	Set fan speed	Set fan speed

Over Heating

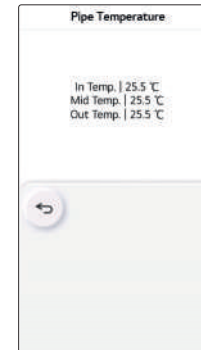
Provides an adjustable deadband around the heating setpoint through selectable heating thermal on/off values.



Value
Step0 : Default value
Step1 : 4 °C / 6 °C
Step2 : 2 °C / 4 °C
Step3 : -1 °C / 1 °C
Step4 : -0.5 °C / 0.5 °C

Pipe Temperature

It is the function to check the temperature of the pipe connected to the product.

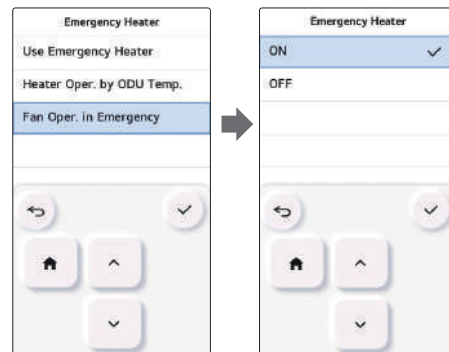


Emergency Heater Setting

Enable the emergency heater control function and the usage environment.

- In the installer setting list, select the emergency heater setting category, and press [OK] button to move to the detail screen.

- In case of an error, it sets whether the emergency heater can be used / outdoor temperature standard heater operation usage setting and temperature step value setting / and during the emergency heater operation, whether to use the indoor unit fan operation.



Value	Outdoor temperature standard heater operation		Fan operation in emergency control
Not use	-		-
Use	Emergency heater	Step 0 ~ 3	On/Off
	Extended emergency heater	Step 0 ~ 15	

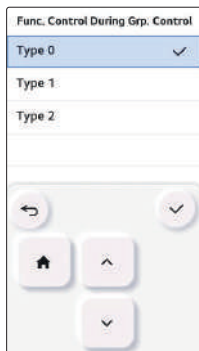
NOTE

This function setting must be carried out by a certified-technician.

Function Control During Group Control Setting

This function enables the control of the common functions or some functions based on the master indoor unit during the group control.

- Change setting values using [\wedge / \vee] button.



Value	Description
TYPE0	Common function
TYPE1	Use expanded function which is based on master indoor unit
TYPE2	<p>Operation standard: When it is operated by wired remote control, all the indoor units connected operate in the same status. When it is operated by wireless remote control, only the indoor unit which has received the command operates. You can use all the functions of the master indoor unit.</p> <p>※ Refer to the example of Type 2 setting operation.</p> <p>※ Caution must be taken in use and management because display mismatch on the wired remote control can occur as a result of individual indoor unit operation.</p>

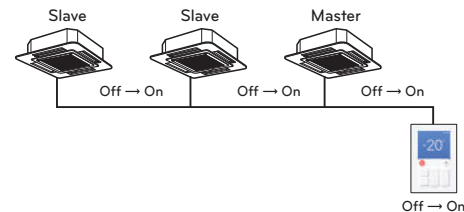
NOTE

Common functions and some indoor unit master standard setting shall be set only during the group control with the same type indoor units.

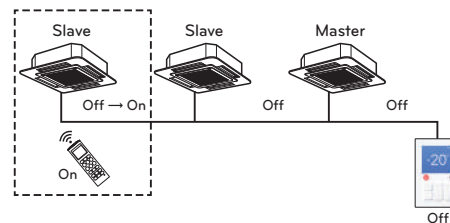
During the group control with different indoor unit types, set it as 'Type 0' to use the existing group control method.

Operation example) Type 2 setting

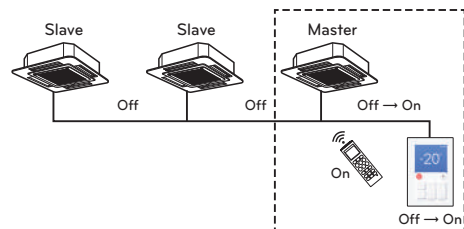
Example 1) When controlling using a wired remote control



Example 2) When controlling the slave using a wireless remote control



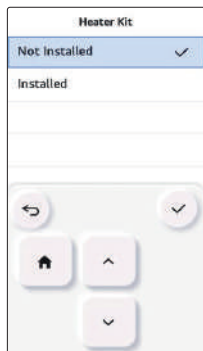
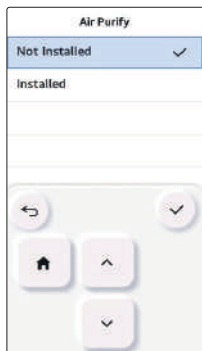
Example 3) When controlling the master using a wireless remote control



External Device of Indoor Unit Setting

It is the function to set whether to mount option unit (Air purify / Humidification / Heater / Ventilation / Elevation grill / Aux Heater / Refrigerant leakage detection sensor) when it is additionally installed or removed after the mass production.

- You can set the following setting values using [\wedge / \vee] button.

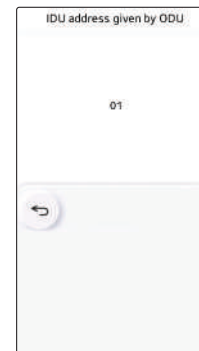


Function	Value
Air purify	Not installed / Installed
Heater	
Ventilation Kit	
Refrigerant leakage detection sensor	
Elevation Grill	
Humidification Kit	Step 0 : Not installed Step 1 : Installed (Non-Duct) Step 2 : Installed (Ducted)
Aux Heater	

Indoor Unit Address Verification

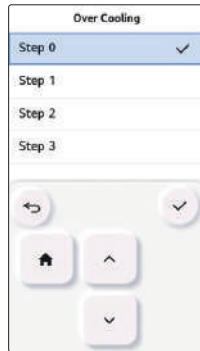
This function allows you to check the address of the indoor unit designated by the outdoor unit.

- In the installer setting list, select the indoor unit address check category, and press [OK] button to move to the detail screen.



Over Cooling

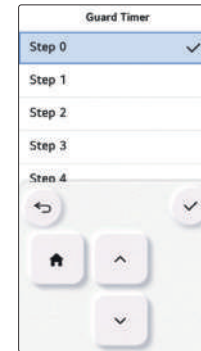
Provides an adjustable deadband around the cooling setpoint through selectable cooling thermal on/off values.



Value
Step0 : 0.5°C / -0.5°C
Step1 : 6°C / 4°C
Step2 : 4°C / 2°C
Step3 : 1°C / -1°C

Guard Timer

This function sets the outdoor unit cycle conversion operation standby time, and sets the outdoor unit protection time for cycle conversion.

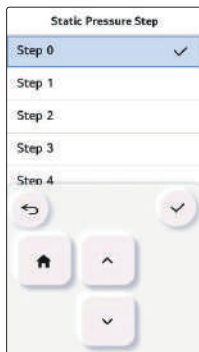


Step	Value
0	0 minute
1	15 minutes
2	30 minutes
3	45 minutes
4	60 minutes

Static Pressure Step Setting

It is the function to subdivide and set the product's Static pressure to 11 stages.

- Change setting values using [Λ / ∇] button.



Value
Step 0 ~ Step 11

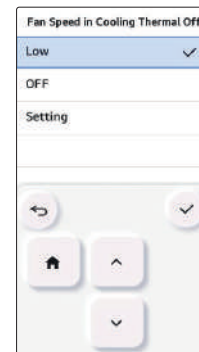
! NOTE

If Static pressure step setting is used, the Static pressure setting is not used.
For the Static pressure step value for each stage, refer to the indoor unit product manual

Fan Speed in Cooling Thermal Off

Sets the indoor unit fan speed, in cooling mode, during thermal off condition.

- Select value using [Λ / ∇] button.

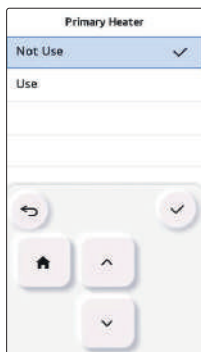


Value	
Low	Fan speed low
Off	Fan off
Setting	Fan speed setting value

Primary Heater Setting

It is the function to set the heater usage to have higher priority over the outdoor unit cycle during the indoor unit heating operation.

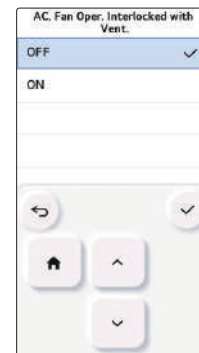
- You can set the following setting values using [^ / v] button.



Value	Description
Not use	During the heating, heater is set to be used as secondary
Use	During the heating, heater is set to be used as main

Air conditioner Fan operation interlocked with ventilation setting

It is the function to set the air conditioner fan operation if the ventilation is operated while the air conditioner operation is stopped when the air conditioner and the ventilation are installed to interface with each other.



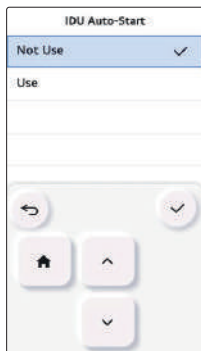
Value	Description
Off	The air conditioner indoor unit Fan is Off during the ventilation interface
On	The air conditioner indoor unit operates in very weak wind during the ventilation interface

- When the air conditioner operation is Off, if the ventilation product is in operation, the air conditioner fan shall be operated, and when the fan is in operation, dust may fall, so it is the function to set the air conditioner fan operation status in case of ventilation interface through the setting.

Indoor Unit Auto-Start Setting

It is a function that sets whether to restore the indoor unit operation by resuming the previous power-on state or as power-off state in the power failure compensation.

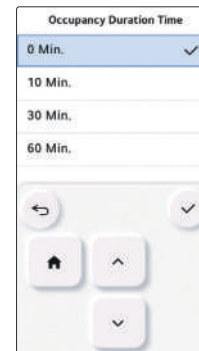
- You can set the following setting values using [\wedge / \vee] button.



Value	Description
Use	Use indoor unit auto restart
Not use	Not use indoor unit auto restart

Occupancy duration time setting

This function sets the absence determination maintenance time among the in-room sensor values.

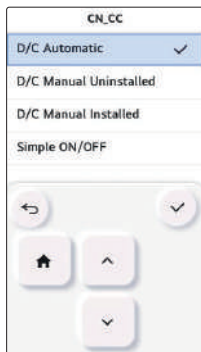


Value
0 minute
10 minutes
30 minutes
60 minutes

CN_CC Setting

It is the function to set the usage of the indoor unit's CN_CC port.

- Select CN_CC setting category, and press [OK] button to move to the detail screen.



Value	Description
DC auto install (default)	When power is applied to the product, indoor unit when the contact point is on in Dry Contact installed state recognizes Dry Contact installation
DC manual not install	Do not use (Installed) Dry Contact
DC manual install	Use (Installed) Dry Contact
Simple ON/OFF	Use as Programmable DI/DO (Simple On/Off)

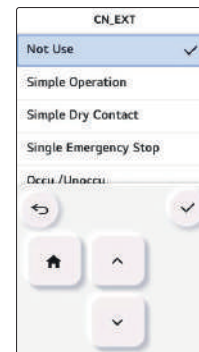
NOTE

CN_CC is the device connected to the indoor unit to recognize and control the external contact point.

CN_EXT Setting

It is the function to set to control the external input and output according to DI/DO set by the customer using the indoor unit's Dry Contact Port. (It is the function to decide the usage of the contact point port (CN_EXT) mounted in the indoor unit PCB.)

- In the installer setting list, select CN_EXT setting category, and press [OK] button to move to the detail screen.

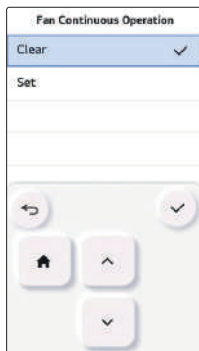


Value	Description
Not use (default)	Use installer code No. 41 setting value (simple Dry Contact setting value)
Simple operation control	Simple operation On/Off
Simple Dry Contact	Dry Contact (Simple Contact)
Single emergency stop	Indoor unit single emergency stop
All emergency stop	Indoor unit all emergency stop ※ It can be set only when there is indoor unit emergency stop function.
Occupied / Unoccupied	Occupied / Unoccupied
Window Contact	Indoor unit operation = Off, Window contact has no effect Indoor unit operation = On, Window contact will control IDU operation based on window contact. Remote Controller Unlocked Window contact open = IDU operation Off, Window contact closed = IDU operation On.
Window Contact Lock	Indoor unit operation = Off, Window contact has no effect Indoor unit operation = On, Window contact will control IDU operation based on window contact. Remote Controller Locked Window contact open = IDU operation Off, Window contact closed = IDU operation On.
MPM	Individual power module interlock mode

Fan Continuous Operation Setting

It is the function to set the indoor unit's continued fan function usage. (It is the function to maximize the cooling/heating efficiency by the outdoor unit operating the indoor unit fan operation longer than the previous operation method.)

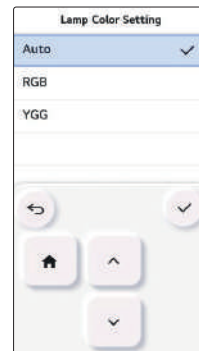
- You can set the following setting values using [^ / v] button.



Value	Description
Clear	Do not use continued fan usage
Set	Use continued fan usage

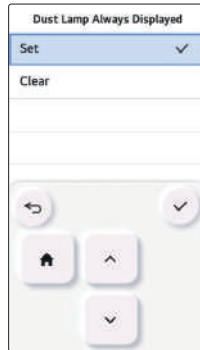
Lamp Color Setting

It is the function to select the LED color to display the fine dust status of the product.



Dust Lamp Always Displayed

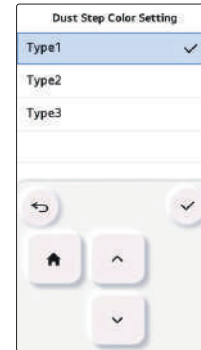
It is the function to set whether to regularly display the dust concentration on the LED lamp mounted on the indoor unit.



Value	Description
Set	Dust concentration display always on during operation
Clear	Product operation status display

Dust Step Color Setting

It is the function to change the color display method for each stage of fine dust according to national standards.

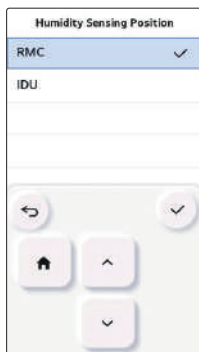


Value	Step
Type 1	4 Step (for Korea)
Type 2	4 Step (for Global)
Type 3	6 Step (for China)

Humidity Sensing Position

It is the function to set the location to detect humidity.

- You can use [Λ / ∨] button to set the following setting values.



Value	Description
Remote Controller (RMC) (Default)	Humidity sensor of the remote controller itself
Indoor Unit (IDU)	Humidity received from indoor unit

Outdoor Temp. for Heating Stages

It is a function that sets outdoor temperature values for two stage heating.

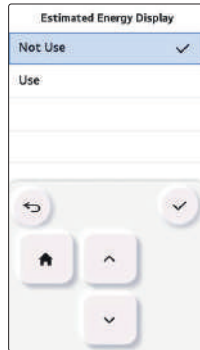
if user set outdoor temperature T1 and T2, Indoor unit will select heating stage between Indoor unit operation and heater operation.



Setting value	Option	T1 value	T2 value
Not Use	-	-	-
Auto	-	-23 ~ 16 °C	-23 ~ 51 °C
		(-10 ~ 60 °F)	(-10 ~ 130 °F)
Manual	Heat pump	-	-
	Heater		
	Heater + H/P		

Estimated Energy Display

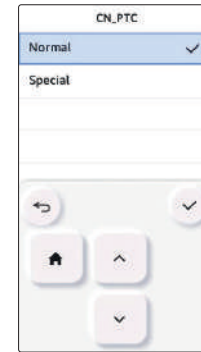
This function can set to display energy data which outdoor unit estimated power consumption data without wattmeter.



Setting Value	Description
Use	Display energy consumption data which outdoor unit estimated
Not Use	Not display energy consumption data which outdoor unit estimated

CN_PTC Setting

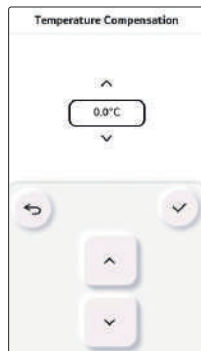
This is a function to set PTC Port of indoor unit.



Setting value	Description
Normal	Auxiliary heating interlock deactivated
Special	Auxiliary heating interlock activated

Temperature Compensation

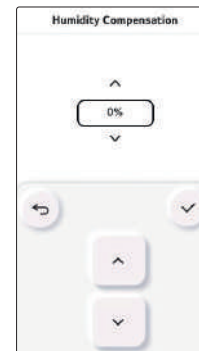
You can display on the screen by applying the compensation value to the temperature value detected by the remote controller.



Value
-5 °C~5 °C (-10 °F~10 °F)

Humidity Compensation

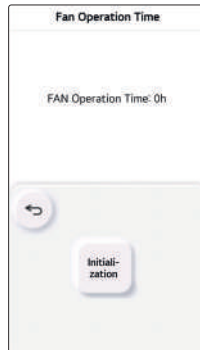
Compensation value can be applied to the humidity value detected by the remote controller to display on the screen.



Value
-10%~10%

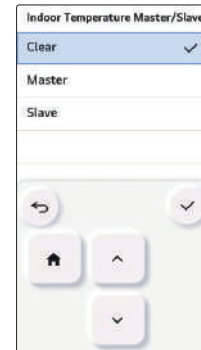
FAN Operation Time

It is the function to display the operation cumulative time of the indoor unit fan motor.



Indoor Temperature Master / Slave

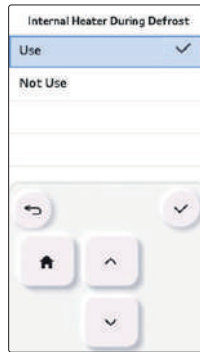
It is the function to set the Master / Slave for the temperature sensors for each indoor unit.



Value	Master address	Description
Clear	-	Cancel Indoor temperature master/slave function
Master	-	Set based on Indoor temperature
Slave	00 - FF	Use the standard temperature of the master indoor unit

Internal Heater During Defrost (Heater On in Defrost)

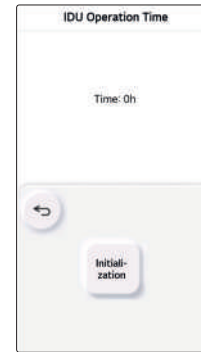
This function keeps the internal heater in use during defrosting.



Setting	Description
Not Use	Not use internal heater during defrost
Use	Use internal heater during defrost

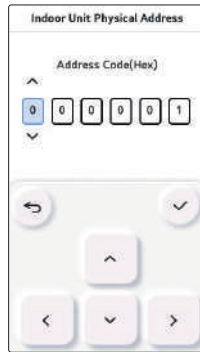
IDU Operation Time

A feature that displays the cumulative time that the indoor unit has been on.



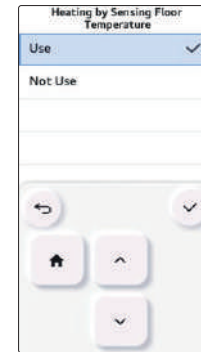
Indoor Unit Physical Address

It is the function to set the physical address of the indoor unit.



Heating By Sensing Floor Temperature

It is the function to set whether to use the floor temperature detection sensor.

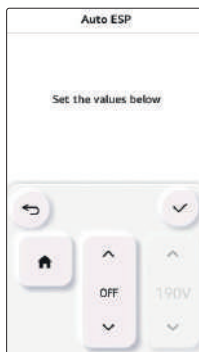


Value	Description
Use	Floor temperature detection sensor used
Not use	Floor temperature detection sensor not used

Auto ESP

This function automatically sets the rotation speed of the fans corresponding to each step of rated airflow for easy installation.

- Select Auto ESP and press the [OK] button to move to the detail screen.

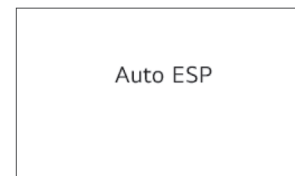


After selecting the voltage setting, the product will automatically operate and automatically set the rotation speed for each fan speed - High, Medium, and Low.

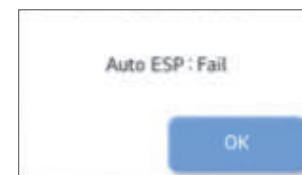
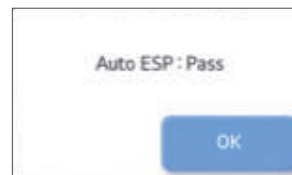
Check the product type and select "Auto" for a Single product and "Manual" for a Multi V product.

Value	Description
Off	Not in use
Auto	Automatically selects the voltage
Manual	Selects the voltage (190V-270V) * Only for Multi V products

While setting, a pop-up is displayed. This means that Auto ESP is being set. (It takes approximately 3 to 8 minutes.)



Product operation is terminated once the rotation speed setting is complete. You can check the results as Pass or Fail.



If it fails, you cannot use the Auto ESP function.

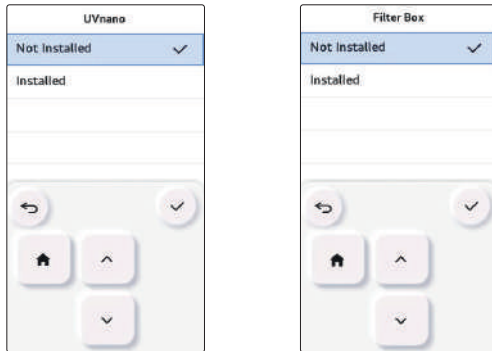
Instead of Auto ESP, the conventional ESP setting method can be used.

NOTE

If Auto ESP is incorrectly set, the air conditioner may malfunction. This function must be set by an installation specialist with an installation license.

UVnano / Filter Box

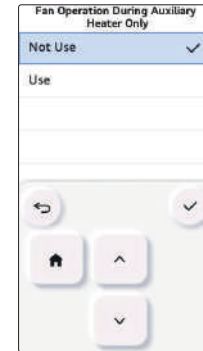
It is the function to set whether to mount option unit (UVnano/Filter box) when it is additionally installed or removed after the mass production



Function	Value
UVnano	Not Installed / Installed
Filter Box	

Fan Operation During Auxiliary Heater Only

This is a function to set the indoor unit fan to be used even when the Auxiliary heater is operating alone.

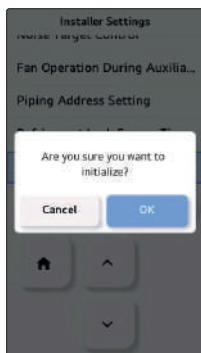


Value	
Not use	Use

Password Initialization

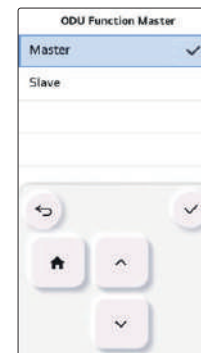
It is the function to initialize (0000) when you forgot the password set in the remote controller.

- In the installer setting list, select the password initialization setting category, and press [OK] button to move to the detail screen.
- When you press "initialization" button, a popup screen appears, and when you press "check" button, password initialization starts, and the user password is changed to 0000.



ODU Function Master

It is the function to set the outdoor unit's function Master / Slave.



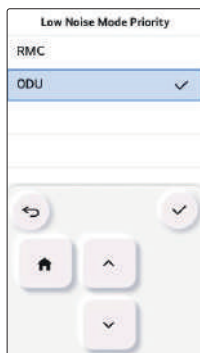
Value	Description
Slave	Cannot enter the Smart load control function setting. Cannot enter the low noise operation time setting. Cannot enter the refrigerant noise reduction setting. Cannot enter the defrost mode setting. Cannot enter the Low Noise Mode Priority Setting
Master	Smart load control function setting is possible. Low noise operation time setting is possible. Refrigerant noise reduction setting is possible. Low Noise Mode Priority Setting is possible. Defrost mode setting is possible.

CAUTION

When you change the outdoor unit function master setting from master to slave, check the operation status of the outdoor unit function (outdoor unit low noise operation, smart load control) and make sure to stop the outdoor unit function before the change.

Low Noise Mode Priority Setting

It is the function to set the low noise mode control main agent. (It is the function to set that only one of the outdoor unit / remote controller can control the low noise operation.)



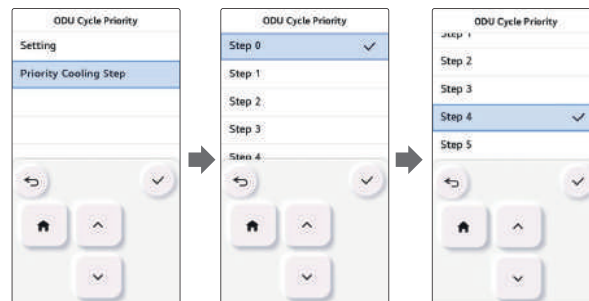
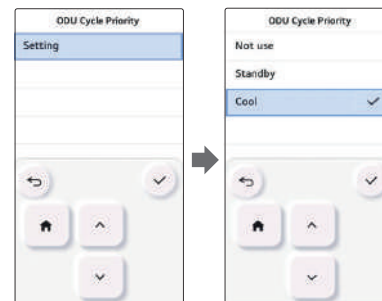
Value	Description
RMC	Ignore the outdoor unit PCB's low noise operation Switch Setting value - Function setting : Remote controller low noise operation time menu activation
ODU(default)	It is controlled in the outdoor unit itself according to the outdoor unit PCB's low noise operation Switch Setting value - Function setting : Remote controller low noise operation time menu deactivation

ODU Cycle priority

This function can set cycle priority of outdoor unit.

Multi V Heat Pump system does not support mixed mode therefore wired remote controller can not show opposite operation mode for select option while ODU operate cooling or heating cycle.

Set this function user can select opposite operation mode with wired remote controller and indoor units enter to 'standby' status or outdoor unit can support cooling first and operate heating with heater.



Option	Description
Not use	Does not support opposite cycle operation using wired remote controller - When ODU operate as cooling cycle selectable operation modes with wired remote controller are cool, auto, dehumidification and fan. - When ODU operate as heating cycle selectable operation modes with wired remote controller are heat, auto and fan.
Standby	When user set opposite operation mode using wired remote controller indoor unit stop thermal operation and fan.
Cool	Cooling cycle has a priority. When user change operation mode of specific indoor unit to cooling on heating cycle, outdoor unit change cycle to cooling and Indoor unit keep heating operation using heater. ※ Please set emergency heater and aux heater function before using this option.

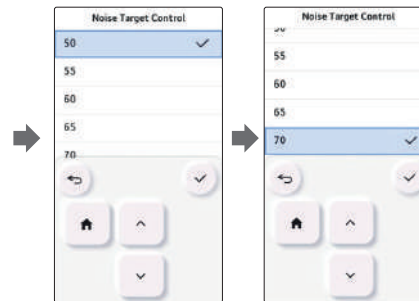
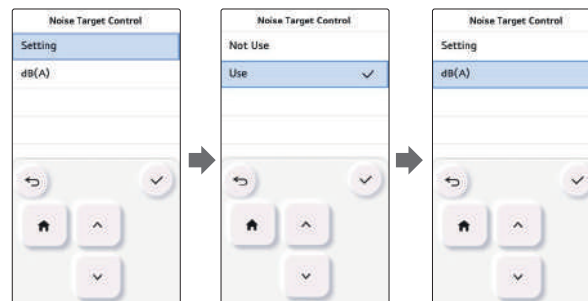
※ When user select cooling option, additional setting menu will be activated.
The additional timer setting menu is for setting minimum cooling operation period.

- Once outdoor unit change

Setting Value	Cooling operation time
Step 0	45 min.(Default)
Step 1	30 min.
Step 2	60 min.
Step 3	90 min.
Step 4	120 min.
Step 5	Not Applied

Noise Target Control

- Set whether to use the Noise Target Control function and the noise limit.
- After setting, press the [OK] button to save the set value.
- If you press the [Back] button without pressing the [OK] button, the set value is not saved and it moves to the list screen.



Noise Target Control VER.1

Value	Noise limit (dB)				
Not use	-				
Use	50	55	60	65	70



Noise Target Control VER.2

- Set whether to use outdoor unit noise limitation, noise limitation value and start time for each time zone.
- Time must be set for at least 1 hour for each time zone. The same time cannot be selected across zones.

Use Setting	Daytime (dB) / evening (dB) / nighttime (dB) noise limitation value (dB)				
Not use	-				
Use	50	55	60	65	70

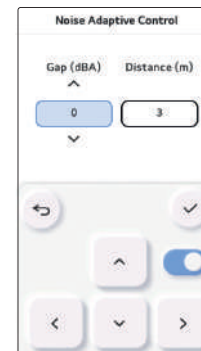
Time Setting	Setting Value
Daytime	AM 1~12, PM 1~12
Evening	AM 1~12, PM 1~12
Nighttime	AM 1~12, PM 1~12

NOTE

- The Noise Target Control function limits the product's capabilities to prioritize noise while running.
- Pay special attention to the settings as a weakening of cooling or heating may occur.
- The range of noise limits may vary depending on the version of the remote control and the connected product.
- The configuration of the screen displayed may vary depending on the remote control version and the connected product.

Noise Adaptive Control

The Noise Adaptive Control function controls the noise generated by the outdoor unit by limiting the operation of the outdoor unit COMP and FAN according to the surrounding noise.



- When Noise Adaptive Control is set to use,
 - Set the gap setting between the surrounding noise and the target noise in decibel (dB) units.
 - Set the distance setting between the outdoor unit product and customer in meter (m) units.

Value	Gap (dBA)					Distance (m)
Not use	-					-
Use	-6	-3	0	3	6	3 ~ 48

NOTE

- The Noise Adaptive Control function limits the product's capabilities to prioritize noise reduction while running.
- Pay special attention to the settings as a weakening of cooling or heating may occur.
- The function is effective only when the distance between customer and outdoor unit product is 3~48 meters.

Piping Address Setting

This function sets the piping address of the "Multi" series.



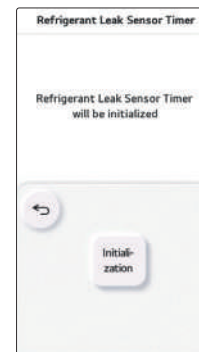
Address code	
Branch Distribution Unit Address	Piping Address
0~3	A~E

! NOTE

- Depending on the version of remote control, this function may not be activated.
- This setting may differ from the value automatically set by the outdoor unit to the piping address.
- If the outdoor unit proceeds with automatic piping address setting, this setting will not be applied.

Refrigerant Leak Sensor Timer

This function resets the life timer of the refrigerant leakage detection sensor.



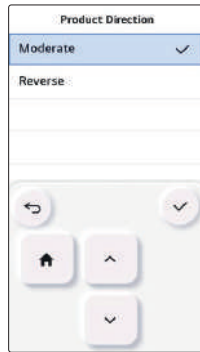
- Please make sure to reset the refrigerant leakage detection sensor, if you replaced it. The product may malfunction, if you don't reset it.

! NOTE

- Depending on the version of remote control, this function may not be activated.

Product Direction

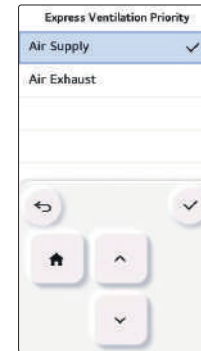
It is the function to set the direction of the ventilation product.



Setting	
Moderate	Reverse

Express Ventilation Priority

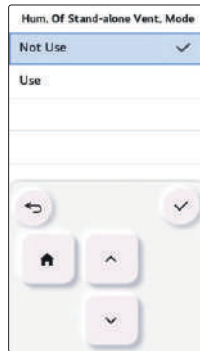
It is the function to set the priority of the air supply and air discharge during the express ventilation operation.



Value	
Air Supply	Air Exhaust

Humidification of Stand-alone Ventilation Mode

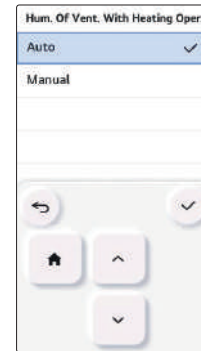
It is the function to set whether to use the humidification function during the ventilation product single operation.



Value	
Not Use	Use

Humidification of Ventilation with Heating Operation

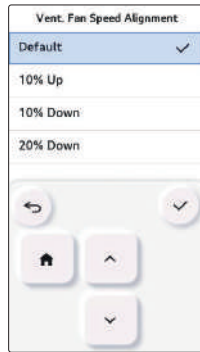
It is the function to set the heating humidification function of the direct ventilation to be automatic or manual.



Value	
Manual	Auto

Ventilation Fan Speed Alignment

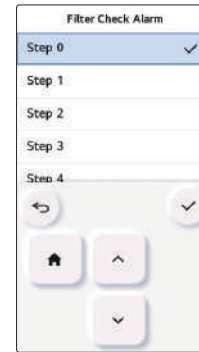
It is the function to change the standard fan speed of the ventilation product.



Value			
Default	10% Up	10% Down	20% Down

Filter Check Alarm

This function sets the filter check alarm of the ventilation product.



Value
Step 0-5

GUIDE TO DIFFERENT MODE OPERATION/OPEN SOURCE SOFTWARE

Different mode operation

Different mode operation is the case when the indoor units' operation modes are different when multiple indoor units are installed to one outdoor unit. (Different mode operation doesn't happen in the cooling exclusive model.)

- Example of different mode operation
 - When one indoor unit is operated in heat while several indoor units one outdoor unit are operated in cooling, the heating operation is not performed.
 - With one outdoor unit, while several indoor units are in heat mode, if one indoor unit requests in cooling or dehumidification, the operation is not performed.

OPEN SOURCE SOFTWARE NOTICE INFORMATION

To obtain the source code under GPL, LGPL, MPL, and other open source licenses, that is contained in this product, please visit <http://opensource.lge.com>. In addition to the source code, all referred license terms, warranty disclaimers and copyright notices are available for download. LG Electronics will also provide open source code to you on CD-ROM for a charge covering the cost of performing such distribution (such as the cost of media, shipping, and handling) upon email request to opensource@lge.com. This offer is valid for a period of three years after our last shipment of this product. This offer is valid to anyone in receipt of this information.

